

## Sck Rabbit pAb

CatalogNo: YT4222

### | Key Features

#### Host Species

- Rabbit

#### Reactivity

- Human,Rat

#### Applications

- WB,IHC

#### MW

- 59kD (Observed)

#### Isotype

- IgG

### | Recommended Dilution Ratios

WB 1:500-2000

IHC 1:50-300

### | Storage

#### Storage\*

-15°C to -25°C/1 year(Do not lower than -25°C)

#### Formulation

Liquid in PBS containing 50% glycerol, 0.5% BSA and 0.02% sodium azide.

### | Basic Information

#### Clonality

Polyclonal

### | Immunogen Information

#### Immunogen

The antiserum was produced against synthesized peptide derived from human SHC2. AA range:261-310

#### Specificity

Sck Polyclonal Antibody detects endogenous levels of Sck protein.

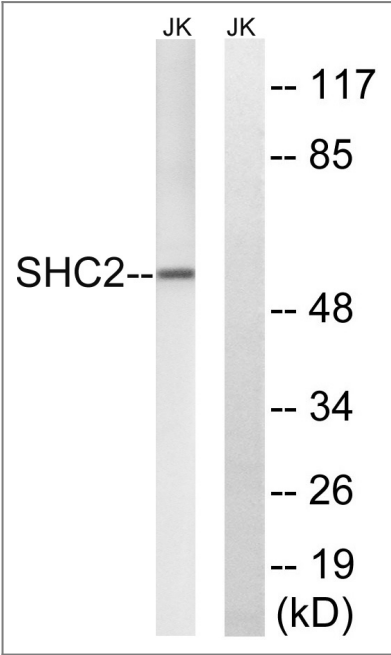
### | Target Information

#### Gene name

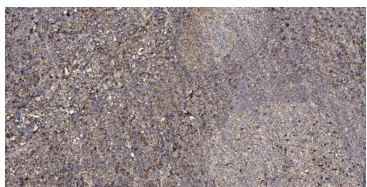
SHC2

Protein Name	SHC-transforming protein 2		
	Organism	Gene ID	UniProt ID
	Human	<a href="#">25759;</a>	<a href="#">P98077;</a>
	Mouse		<a href="#">Q8BMC3;</a>
	Rat	<a href="#">314612;</a>	<a href="#">O70142;</a>
Cellular Localization	intracellular,cytosol,plasma membrane,		
Tissue specificity	Expressed in brain. Expressed at high level in the hypothalamus and at low level in the caudate nucleus.		
Function	Domain:The PID domain mediates binding to the TrkA receptor.,Function:Signaling adapter that couples activated growth factor receptors to signaling pathway in neurons. Involved in the signal transduction pathways of neurotrophin-activated Trk receptors in cortical neurons.,miscellaneous:PubMed:15057824 has shown that SHC2 is poorly phosphorylated by the Trk receptors, in opposite to PubMed:12006576.,PTM:Phosphorylated on tyrosines by the Trk receptors.,similarity:Contains 1 PID domain.,similarity:Contains 1 SH2 domain.,subunit:Interacts with the Trk receptors in a phosphotyrosine-dependent manner and MEGF12. Once activated, binds to GRB2.,tissue specificity:Expressed in brain. Expressed at high level in the hypothalamus and at low level in the caudate nucleus.,		

Validation Data



Western blot analysis of lysates from Jurkat cells, using SHC2 Antibody. The lane on the right is blocked with the synthesized peptide.



Immunohistochemical analysis of paraffin-embedded human tonsil. 1, Antibody was diluted at 1:200(4° overnight). 2, Tris-EDTA,pH9.0 was used for antigen retrieval. 3,Secondary antibody was diluted at 1:200(room temperature, 45min).

## | Contact information

Orders: [order.cn@immunoway.com](mailto:order.cn@immunoway.com)  
Support: [support.cn@immunoway.com](mailto:support.cn@immunoway.com)  
Telephone: 400-8787-807(China)  
Website: <http://www.immunoway.com.cn>  
Address: 2200 Ringwood Ave San Jose, CA 95131 USA



Please scan the QR code  
to access additional  
product information:  
**Sck Rabbit pAb**

---

For Research Use Only. Not for Use in Diagnostic Procedures.

[Antibody](#) | [ELISA Kits](#) | [Protein](#) | [Reagents](#)