

## SAP 14 Rabbit pAb

CatalogNo: YT4210

### | Key Features

#### Host Species

- Rabbit

#### Reactivity

- Human, Mouse

#### Applications

- WB, ELISA

#### MW

- 14kD (Observed)

#### Isotype

- IgG

### | Recommended Dilution Ratios

**WB 1:500-1:2000**

**ELISA 1:40000**

**Not yet tested in other applications.**

### | Storage

#### Storage\*

-15°C to -25°C/1 year (Do not lower than -25°C)

#### Formulation

Liquid in PBS containing 50% glycerol, 0.5% BSA and 0.02% sodium azide.

### | Basic Information

#### Clonality

Polyclonal

### | Immunogen Information

#### Immunogen

The antiserum was produced against synthesized peptide derived from human SF3B14. AA range: 76-125

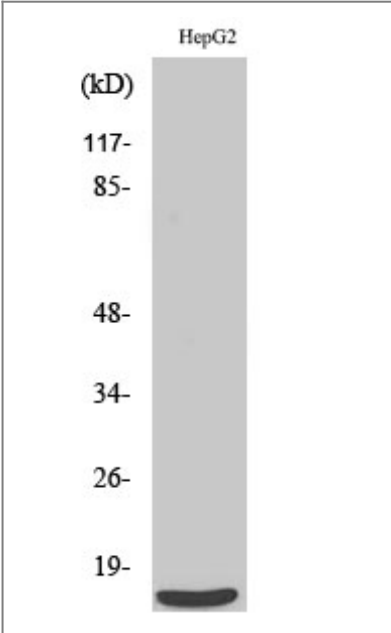
#### Specificity

SAP 14 Polyclonal Antibody detects endogenous levels of SAP 14 protein.

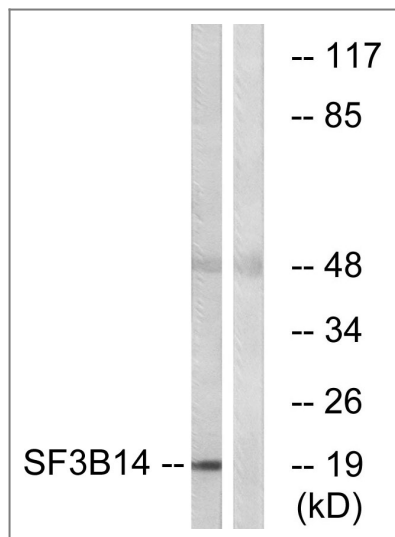
### | Target Information

Gene name	SF3B14		
Protein Name	Pre-mRNA branch site protein p14		
	Organism	Gene ID	UniProt ID
	Human	<a href="#">51639</a> ;	<a href="#">Q9Y3B4</a> ;
	Mouse	<a href="#">66055</a> ;	<a href="#">P59708</a> ;
Cellular Localization	Nucleus .		
Tissue specificity	Hypothalamus,Testis,Umbilical cord blood,Uterus,		
Function	Function:Necessary for the splicing of pre-mRNA. Directly contacts the pre-mRNA branch site adenosine for the first catalytic step of splicing. Enters the spliceosome and associates with the pre-mRNA branch site as part of the 17S U2 or, in the case of the minor spliceosome, as part of the 18S U11/U12 snRNP complex, and thus may facilitate the interaction of these snRNP with the branch sites of U2 and U12 respectively.,similarity:Contains 1 RRM (RNA recognition motif) domain.,subunit:Interacts with SF3B1/SF3b155 in the region of amino acids 255-424. Interacts to a lesser extent with SF3b130.,		

Validation Data



Western Blot analysis of various cells using SAP 14 Polyclonal Antibody cells nucleus extracted by Minute TM Cytoplasmic and Nuclear Fractionation kit (SC-003,Inventbiotech,MN,USA).



Western blot analysis of lysates from HepG2 cells, using SF3B14 Antibody. The lane on the right is blocked with the synthesized peptide.

## Contact information

Orders: order.cn@immunoway.com  
 Support: support.cn@immunoway.com  
 Telephone: 400-8787-807(China)  
 Website: <http://www.immunoway.com.cn>  
 Address: 2200 Ringwood Ave San Jose, CA 95131 USA



Please scan the QR code to access additional product information:  
**SAP 14 Rabbit pAb**

For Research Use Only. Not for Use in Diagnostic Procedures.

[Antibody](#) | [ELISA Kits](#) | [Protein](#) | [Reagents](#)