

## Sam 68 Rabbit pAb

CatalogNo: YT4209

### | Key Features

#### Host Species

- Rabbit

#### Reactivity

- Human, Mouse, Rat

#### Applications

- WB, ELISA

#### MW

- 68kD (Observed)

#### Isotype

- IgG

### | Recommended Dilution Ratios

**WB 1:500-1:2000**

**ELISA 1:10000**

**Not yet tested in other applications.**

### | Storage

**Storage\*** -15°C to -25°C/1 year (Do not lower than -25°C)

**Formulation** Liquid in PBS containing 50% glycerol, 0.5% BSA and 0.02% sodium azide.

### | Basic Information

**Clonality** Polyclonal

### | Immunogen Information

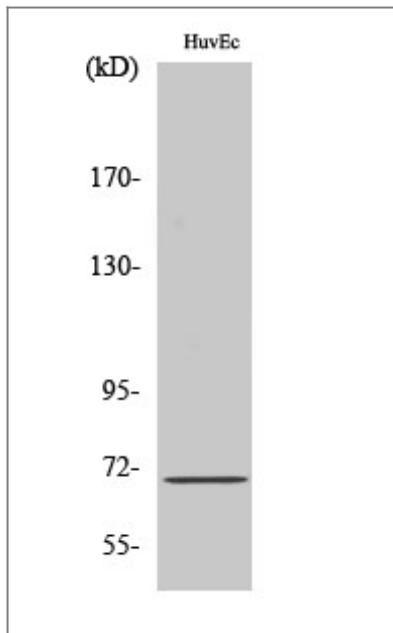
**Immunogen** The antiserum was produced against synthesized peptide derived from human Sam 68. AA range: 96-145

**Specificity** Sam 68 Polyclonal Antibody detects endogenous levels of Sam 68 protein.

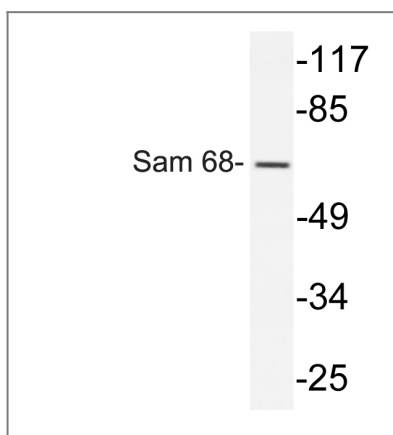
### | Target Information

Gene name	KHDRBS1		
Protein Name	KH domain-containing RNA-binding signal transduction-associated protein 1		
	Organism	Gene ID	UniProt ID
	Human	<a href="#">10657</a> ;	<a href="#">Q07666</a> ;
	Mouse	<a href="#">20218</a> ;	<a href="#">Q60749</a> ;
	Rat	<a href="#">117268</a> ;	<a href="#">Q91V33</a> ;
Cellular Localization	Nucleus . Cytoplasm . Membrane . Predominantly located in the nucleus but also located partially in the cytoplasm. .		
Tissue specificity	Ubiquitously expressed in all tissue examined. Isoform 1 is expressed at lower levels in brain, skeletal muscle, and liver whereas isoform 3 is intensified in skeletal muscle and in liver.		
Function	<p>developmental stage:Isoform 3 is only expressed in growth-arrested cells.,Domain:The KH domain is required for binding to RNA.,Domain:The Pro-rich domains are flanked by Arg/Gly-rich motifs which can be asymmetric dimethylated on arginine residues to give the DMA/Gly-rich regions. Selective methylation on these motifs can modulate protein-protein interactions.,Function:Isoform 3, which is expressed in growth-arrested cells only, inhibits S phase.,Function:Recruited and tyrosine phosphorylated by several receptor systems, for example the T-cell, leptin and insulin receptors. Once phosphorylated, functions as an adapter protein in signal transduction cascades by binding to SH2 and SH3 domain-containing proteins. Role in G2-M progression in the cell cycle. Represses CBP-dependent transcriptional activation apparently by competing with other nuclear factors for binding to CBP. Also acts as a putative regulator of mRNA stability and/or translation rates and mediates mRNA nuclear export.,PTM:Acetylated. Positively correlates with ability to bind RNA.,PTM:Arg-291, Arg-331 and Arg-346 are found to be also dimethylated, probably to asymmetric dimethylarginine.,PTM:Arginine methylation is required for nuclear localization. Also can affect interaction with other proteins. Inhibits interaction with Src-like SH3 domains, but not interaction with WW domains of WBP4/FBP21 AND FNBP4/FBP30.,PTM:Tyrosine phosphorylated by several non-receptor tyrosine kinases, for example LCK, FYN and JAK3. Negatively correlates with ability to bind RNA but required for many interactions with proteins.,sequence Caution:Intron retention.,similarity:Belongs to the KHDRBS family.,similarity:Contains 1 KH domain.,subunit:Self-associates to form homooligomers when bound to RNA, oligomerization appears to be limited when binding to proteins. Interacts with CBL, KHDRBS3, LCK, GRB2, JAK3, PIK3R1, PLCG1, PTPN6, RASA1, RBMY1A1 and STAT3. Interacts with PRMT1. Binds the WW domains of WBP4/FBP21, FNBP4/FBP30 and the SH3 domain of FYN through the Arg/Gly-rich-flanked Pro-rich regions.,tissue specificity:Ubiquitously expressed in all tissue examined. Isoform 1 is expressed at lower levels in brain, skeletal muscle, and liver whereas isoform 3 is intensified in skeletal muscle and in liver.,</p>		

| Validation Data



Western Blot analysis of various cells using Sam 68 Polyclonal Antibody



Western blot analysis of lysate from HUVEC cells, using Sam 68 antibody.

## Contact information

Orders: order.cn@immunoway.com  
 Support: support.cn@immunoway.com  
 Telephone: 400-8787-807(China)  
 Website: <http://www.immunoway.com.cn>  
 Address: 2200 Ringwood Ave San Jose, CA 95131 USA



Please scan the QR code to access additional product information:  
**Sam 68 Rabbit pAb**

For Research Use Only. Not for Use in Diagnostic Procedures.

[Antibody](#) | [ELISA Kits](#) | [Protein](#) | [Reagents](#)