

SAE1 Rabbit pAb

CatalogNo: YT4207

Key Features

Host Species

- Rabbit

Reactivity

- Human, Mouse, Rat

Applications

- WB, IHC, IF, ELISA

MW

- 38kD (Observed)

Isotype

- IgG

Recommended Dilution Ratios

WB 1:500-1:2000

IHC 1:100-1:300

IF 1:200-1:1000

ELISA 1:20000

Not yet tested in other applications.

Storage

Storage* -15°C to -25°C/1 year (Do not lower than -25°C)

Formulation Liquid in PBS containing 50% glycerol, 0.5% BSA and 0.02% sodium azide.

Basic Information

Clonality Polyclonal

Immunogen Information

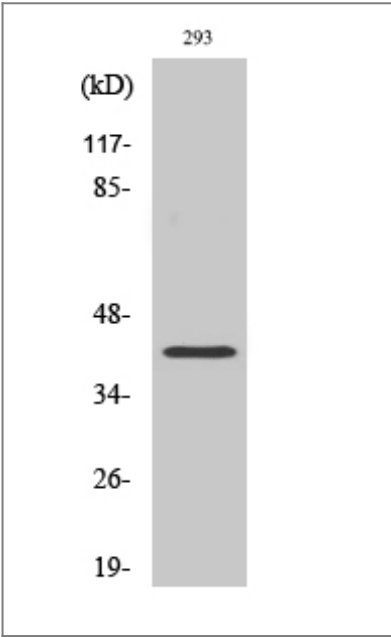
Immunogen The antiserum was produced against synthesized peptide derived from human AOS1. AA range: 221-270

Specificity SAE1 Polyclonal Antibody detects endogenous levels of SAE1 protein.

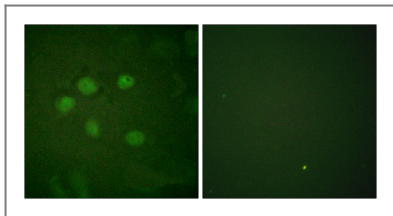
| Target Information

Gene name	SAE1		
Protein Name	SUMO-activating enzyme subunit 1		
	Organism	Gene ID	UniProt ID
	Human	10055 ;	Q9UBE0 ;
	Mouse	56459 ;	Q9R1T2 ;
	Rat	308384 ;	Q6AXQ0 ;
Cellular Localization	Nucleus .		
Tissue specificity	Expression level increases during S phase and drops in G2 phase (at protein level).		
Function	Function:The dimeric enzyme acts as a E1 ligase for SUMO1, SUMO2, SUMO3, and probably SUMO4. It mediates ATP-dependent activation of SUMO proteins and formation of a thioester with a conserved cysteine residue on SAE2.,pathway:Protein modification; protein sumoylation.,PTM:Phosphorylated upon DNA damage, probably by ATM or ATR.,similarity:Belongs to the ubiquitin-activating E1 family.,subunit:Heterodimer of SAE1 and SAE2. The complex binds SUMO proteins via SAE2.,tissue specificity:Expression level increases during S phase and drops in G2 phase (at protein level).,		

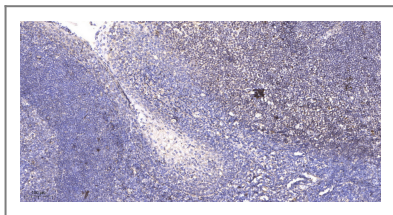
| Validation Data



Western Blot analysis of various cells using SAE1 Polyclonal Antibody cells nucleus extracted by Minute TM Cytoplasmic and Nuclear Fractionation kit (SC-003, Invent biotech, MN, USA).



Immunofluorescence analysis of HUVEC cells, using AOS1 Antibody. The picture on the right is blocked with the synthesized peptide.



Immunohistochemical analysis of paraffin-embedded human tonsil. 1, Antibody was diluted at 1:200(4° overnight). 2, Tris-EDTA,pH9.0 was used for antigen retrieval. 3,Secondary antibody was diluted at 1:200(room temperature, 45min).

| Contact information

Orders: order.cn@immunoway.com
Support: support.cn@immunoway.com
Telephone: 400-8787-807(China)
Website: <http://www.immunoway.com.cn>
Address: 2200 Ringwood Ave San Jose, CA 95131 USA



Please scan the QR code to access additional product information:
SAE1 Rabbit pAb

For Research Use Only. Not for Use in Diagnostic Procedures.

[Antibody](#) | [ELISA Kits](#) | [Protein](#) | [Reagents](#)