

S-100A10 Rabbit pAb

CatalogNo: YT4198

Orthogonal Validated 

Key Features

Host Species

- Rabbit

Reactivity

- Human, Mouse, Rat

Applications

- WB, IHC, IF, ELISA

MW

- 11kD (Observed)

Isotype

- IgG

Recommended Dilution Ratios

WB 1:500-1:2000

IHC 1:100-1:300

ELISA 1:40000

IF 1:50-200

Storage

Storage* -15°C to -25°C/1 year(Do not lower than -25°C)**Formulation** Liquid in PBS containing 50% glycerol, 0.5% BSA and 0.02% sodium azide.

Basic Information

Clonality Polyclonal

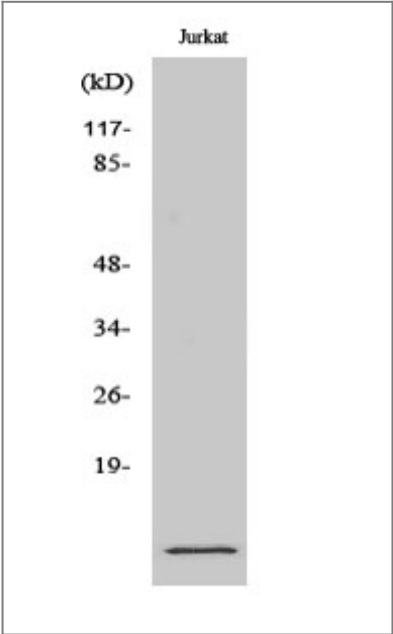
Immunogen Information

Immunogen The antiserum was produced against synthesized peptide derived from human S-100A10. AA range:3-52**Specificity** S-100A10 Polyclonal Antibody detects endogenous levels of S-100A10 protein.

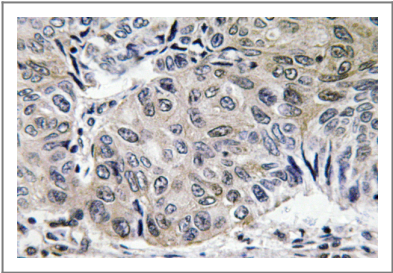
Target Information

Gene name	S100A10		
Protein Name	Protein S100-A10		
	Organism	Gene ID	UniProt ID
	Human	6281 ;	P60903 ;
	Mouse	20194 ;	P08207 ;
	Rat	81778 ;	P05943 ;
Cellular Localization	integral component of membrane,extrinsic component of plasma membrane,membrane raft,extracellular exosome,		
Tissue specificity	Brain,Keratinocyte,		
Function	Function:Because S100A10 induces the dimerization of ANXA2/p36, it may function as a regulator of protein phosphorylation in that the ANXA2 monomer is the preferred target (in vitro) of tyrosine-specific kinase.,miscellaneous:Does not appear to bind calcium. Contains 2 ancestral calcium site related to EF-hand domains that have lost their ability to bind calcium.,similarity:Belongs to the S-100 family.,subunit:Heterotetramer containing 2 light chains of S100A10/p11 and 2 heavy chains of ANXA2/p36. Interacts with SCN10A.,		

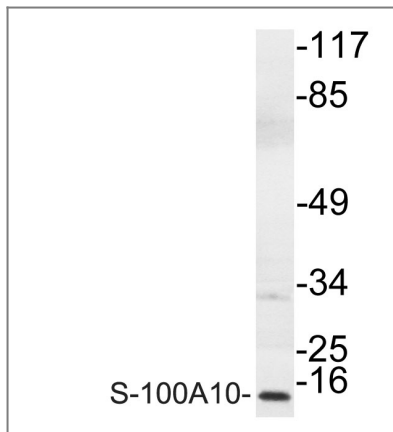
| Validation Data



Western Blot analysis of various cells using S-100A10 Polyclonal Antibody



Immunohistochemistry analysis of S-100A10 antibody in paraffin-embedded human lung carcinoma tissue.



Western blot analysis of lysate from COLO cells, using S-100A10 antibody.

Contact information

Orders: order.cn@immunoway.com
Support: support.cn@immunoway.com
Telephone: 400-8787-807(China)
Website: <http://www.immunoway.com.cn>
Address: 2200 Ringwood Ave San Jose, CA 95131 USA



Please scan the QR code
to access additional
product information:
**S-100A10 Rabbit
pAb**

For Research Use Only. Not for Use in Diagnostic Procedures.

[Antibody](#) | [ELISA Kits](#) | [Protein](#) | [Reagents](#)