

Rsk-1/2/3/4 Rabbit pAb

CatalogNo: YT4183

| Key Features

Host Species

- Rabbit

Reactivity

- Human, Mouse

Applications

- WB, ELISA

MW

- 90kD (Observed)

Isotype

- IgG

| Recommended Dilution Ratios

WB 1:500-1:2000**ELISA 1:20000****Not yet tested in other applications.**

| Storage

Storage*

-15°C to -25°C/1 year (Do not lower than -25°C)

Formulation

Liquid in PBS containing 50% glycerol, 0.5% BSA and 0.02% sodium azide.

| Basic Information

Clonality

Polyclonal

| Immunogen Information

Immunogen

The antiserum was produced against synthesized peptide derived from human RSK1/2/3/4. AA range: 191-240

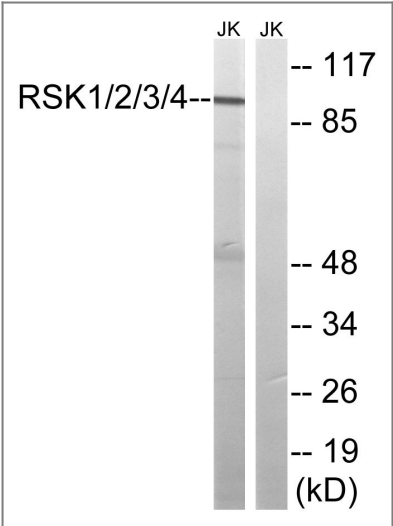
Specificity

Rsk-1/2/3/4 Polyclonal Antibody detects endogenous levels of Rsk-1/2/3/4 protein.

| Target Information

Gene name	RPS6KA1		
Protein Name	Ribosomal protein S6 kinase alpha-1		
	Organism	Gene ID	UniProt ID
	Human	6195 ; 6197 ; 6196 ; 27330 ;	Q15418 ; P51812 ; Q15349 ; Q9UK32 ;
	Mouse	110651 ; 20112 ; 67071 ;	
Cellular Localization	Nucleus. Cytoplasm.		
Tissue specificity	Colon,Epithelium,		
Function	Catalytic activity:ATP + a protein = ADP + a phosphoprotein.,Caution:The sequence shown here is derived from an Ensembl automatic analysis pipeline and should be considered as preliminary data.,cofactor:Magnesium.,enzyme regulation:Activated by multiple phosphorylations on threonine and serine residues.,Function:Serine/threonine kinase that may play a role in mediating the growth-factor and stress induced activation of the transcription factor CREB.,PTM:Autophosphorylated on Ser-380, as part of the activation process.,similarity:Belongs to the protein kinase superfamily.,similarity:Belongs to the protein kinase superfamily. AGC Ser/Thr protein kinase family. S6 kinase subfamily.,similarity:Contains 1 AGC-kinase C-terminal domain.,similarity:Contains 2 protein kinase domains.,subunit:Forms a complex with either ERK1 or ERK2 in quiescent cells. Transiently dissociates following mitogenic stimulation.,		

Validation Data



Western blot analysis of lysates from Jurkat cells, using RSK1/2/3/4 Antibody. The lane on the right is blocked with the synthesized peptide.

Contact information

Orders: order.cn@immunoway.com
Support: support.cn@immunoway.com
Telephone: 400-8787-807(China)
Website: <http://www.immunoway.com.cn>
Address: 2200 Ringwood Ave San Jose, CA 95131 USA



Please scan the QR code
to access additional
product information:
**Rsk-1/2/3/4 Rabbit
pAb**

For Research Use Only. Not for Use in Diagnostic Procedures.

[Antibody](#) | [ELISA Kits](#) | [Protein](#) | [Reagents](#)