

## Rit1 Rabbit pAb

CatalogNo: YT4149

### Key Features

#### Host Species

- Rabbit

#### Reactivity

- Human, Mouse

#### Applications

- WB, ELISA, IHC

#### MW

- 25kD (Observed)

#### Isotype

- IgG

### Recommended Dilution Ratios

WB 1:500-2000

IHC 1:50-300

ELISA 1:2000-20000

### Storage

**Storage\*** -15°C to -25°C/1 year (Do not lower than -25°C)

**Formulation** Liquid in PBS containing 50% glycerol, 0.5% BSA and 0.02% sodium azide.

### Basic Information

**Clonality** Polyclonal

### Immunogen Information

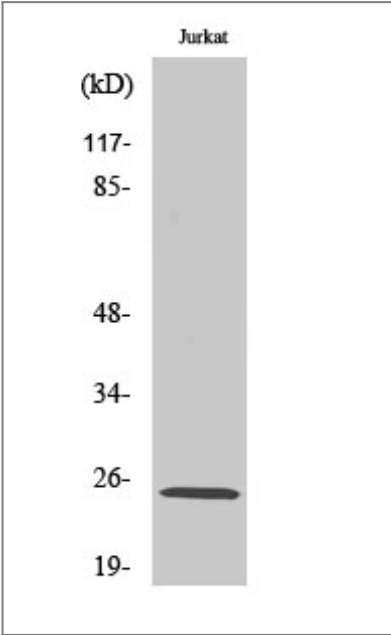
**Immunogen** The antiserum was produced against synthesized peptide derived from human RIT1. AA range: 170-219

**Specificity** Rit1 Polyclonal Antibody detects endogenous levels of Rit1 protein.

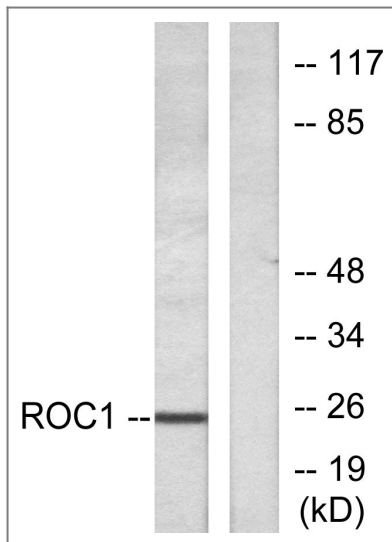
### Target Information

Gene name	RIT1		
Protein Name	GTP-binding protein Rit1		
	Organism	Gene ID	UniProt ID
	Human	<a href="#">6016</a> ;	<a href="#">Q92963</a> ;
	Mouse	<a href="#">19769</a> ;	<a href="#">P70426</a> ;
Cellular Localization	Cell membrane.		
Tissue specificity	Expressed in many tissues.		
Function	enzyme regulation:Alternate between an inactive form bound to GDP and an active form bound to GTP.,Function:Plays a crucial role in coupling NGF stimulation to the activation of both EPHB2 and MAPK14 signaling pathways and in NGF-dependent neuronal differentiation.,miscellaneous:Shows rapid uncatalyzed guanine nucleotide dissociation rates, which are much faster than those of most Ras subfamily members.,miscellaneous:Stimulation of the NGF and EGF receptor signaling pathways results in rapid and prolonged activation.,similarity:Belongs to the small GTPase superfamily. Ras family.,subunit:Interacts with MLLT4, the C-terminal domain of RALGDS and RLF, but not with RIN1 and PIK3CA. RLF binds exclusively to the active GTP-bound form. Strongly interacts with BRAF, but only weakly with RAF1. BARF and RAF1 association is dependent upon the GTP-bound state. Interacts with RGL3.,tissue specificity:Expressed in many tissues.,		

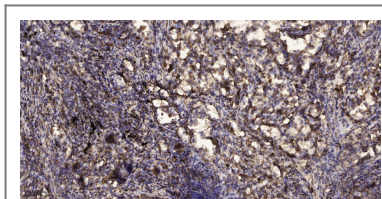
| Validation Data



Western Blot analysis of various cells using Rit1 Polyclonal Antibody diluted at 1:500



Western blot analysis of lysates from Jurkat cells, using RIT1 Antibody. The lane on the right is blocked with the synthesized peptide.



Immunohistochemical analysis of paraffin-embedded human Squamous cell carcinoma of lung. 1, Antibody was diluted at 1:200(4° overnight). 2, Tris-EDTA,pH9.0 was used for antigen retrieval. 3,Secondary antibody was diluted at 1:200(room temperature, 45min).

## Contact information

Orders: [order.cn@immunoway.com](mailto:order.cn@immunoway.com)  
 Support: [support.cn@immunoway.com](mailto:support.cn@immunoway.com)  
 Telephone: 400-8787-807(China)  
 Website: <http://www.immunoway.com.cn>  
 Address: 2200 Ringwood Ave San Jose, CA 95131 USA



Please scan the QR code to access additional product information:  
**Rit1 Rabbit pAb**

For Research Use Only. Not for Use in Diagnostic Procedures.

[Antibody](#) | [ELISA Kits](#) | [Protein](#) | [Reagents](#)