

RIP2 Rabbit pAb

CatalogNo: YT4147

Key Features

Host Species

- Rabbit

Reactivity

- Human, Mouse

Applications

- WB, IHC, IF, ELISA

MW

- 61kD (Observed)

Isotype

- IgG

Recommended Dilution Ratios

WB 1:500-1:2000**IHC 1:100-1:300****ELISA 1:40000****IF 1:50-200**

Storage

Storage*

-15°C to -25°C/1 year (Do not lower than -25°C)

Formulation

Liquid in PBS containing 50% glycerol, 0.5% BSA and 0.02% sodium azide.

Basic Information

Clonality

Polyclonal

Immunogen Information

Immunogen

The antiserum was produced against synthesized peptide derived from human RIPK2. AA range: 146-195

Specificity

RIP2 Polyclonal Antibody detects endogenous levels of RIP2 protein.

Target Information

Gene name RIPK2 CARDIAK RICK RIP2 UNQ277/PRO314/PRO34092

Protein Name Receptor-interacting serine/threonine-protein kinase 2

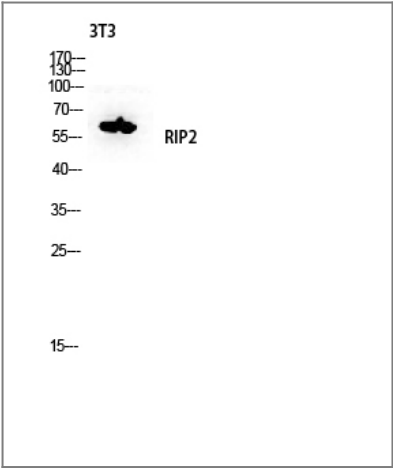
Organism	Gene ID	UniProt ID
Human	8767 ;	O43353 ;
Mouse	192656 ;	P58801 ;

Cellular Localization Cytoplasm .

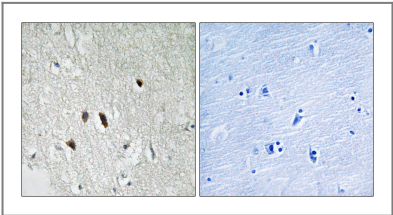
Tissue specificity Detected in heart, brain, placenta, lung, peripheral blood leukocytes, spleen, kidney, testis, prostate, pancreas and lymph node.

Function Catalytic activity:ATP + a protein = ADP + a phosphoprotein.,Function:Activates pro-caspase-1 and pro-caspase-8. Potentiates CASP8-mediated apoptosis. Activates NF-kappa-B.,PTM:Autophosphorylated. Phosphorylated upon DNA damage, probably by ATM or ATR.,similarity:Belongs to the protein kinase superfamily. TKL Ser/Thr protein kinase family.,similarity:Contains 1 CARD domain.,similarity:Contains 1 protein kinase domain.,subunit:Binds to CFLAR/CLARP and CASP1 via their CARD domains. Binds to BIRC3/c-IAP1 and BIRC2/c-IAP2, TRAF1, TRAF2, TRAF5 and TRAF6. May be a component of both the TNFRSF1A and TNFRSF5/CD40 receptor complex.,tissue specificity:Detected in heart, brain, placenta, lung, peripheral blood leukocytes, spleen, kidney, testis, prostate, pancreas and lymph node.,

Validation Data



Western blot analysis of 3T3 lysis using RIP2 antibody. Antibody was diluted at 1:500



Immunohistochemistry analysis of paraffin-embedded human brain tissue, using RIPK2 Antibody. The picture on the right is blocked with the synthesized peptide.

| Contact information

Orders: order.cn@immunoway.com
Support: support.cn@immunoway.com
Telephone: 400-8787-807(China)
Website: <http://www.immunoway.com.cn>
Address: 2200 Ringwood Ave San Jose, CA 95131 USA



Please scan the QR code
to access additional
product information:
RIP2 Rabbit pAb

For Research Use Only. Not for Use in Diagnostic Procedures.

[Antibody](#) | [ELISA Kits](#) | [Protein](#) | [Reagents](#)