

Rim4 Rabbit pAb

CatalogNo: YT4143

Key Features

Host Species

- Rabbit

Reactivity

- Human, Mouse, Rat

Applications

- WB, IHC, IF, ELISA

MW

- 30kD (Observed)

Isotype

- IgG

Storage

Storage* -15°C to -25°C/1 year (Do not lower than -25°C)

Formulation Liquid in PBS containing 50% glycerol, 0.5% BSA and 0.02% sodium azide.

Recommended Dilution Ratios

WB 1:500-1:2000

IHC 1:100-1:300

ELISA 1:20000

IF 1:50-200

Basic Information

Clonality Polyclonal

Immunogen Information

Immunogen The antiserum was produced against synthesized peptide derived from human RIMS4. AA range:33-82

Specificity Rim4 Polyclonal Antibody detects endogenous levels of Rim4 protein.

Target Information

Gene name RIMS4

Protein Name Regulating synaptic membrane exocytosis protein 4

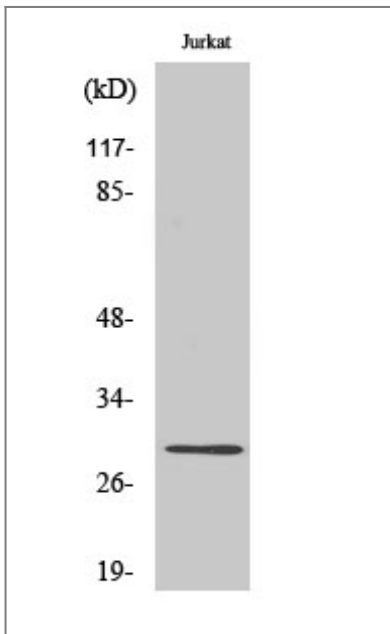
Organism	Gene ID	UniProt ID
Human	140730 ;	Q9H426 ;
Mouse	241770 ;	P60191 ;
Rat	266976 ;	Q8CIX1 ;

Cellular Localization Cell junction, synapse .

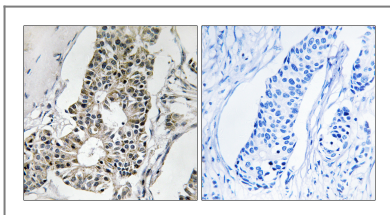
Tissue specificity PCR rescued clones,

Function Caution:Does not bind Rab-3.,Function:Regulates synaptic membrane exocytosis.,PTM:Phosphorylated upon DNA damage, probably by ATM or ATR.,similarity:Contains 1 C2 domain.,subunit:Binds PPFIA3.,

Validation Data



Western Blot analysis of various cells using Rim4 Polyclonal Antibody diluted at 1:500



Immunohistochemistry analysis of paraffin-embedded human breast carcinoma tissue, using RIMS4 Antibody. The picture on the right is blocked with the synthesized peptide.

Contact information

Orders: order.cn@immunoway.com
Support: support.cn@immunoway.com
Telephone: 400-8787-807(China)
Website: <http://www.immunoway.com.cn>
Address: 2200 Ringwood Ave San Jose, CA 95131 USA



Please scan the QR code
to access additional
product information:
Rim4 Rabbit pAb

For Research Use Only. Not for Use in Diagnostic Procedures.

[Antibody](#) | [ELISA Kits](#) | [Protein](#) | [Reagents](#)