

## Ribosomal Protein S18 Rabbit pAb

CatalogNo: YT4125

### | Key Features

#### Host Species

- Rabbit

#### Reactivity

- Human, Mouse, Rat

#### Applications

- WB, ELISA, IHC

#### MW

- 18kD (Observed)

#### Isotype

- IgG

### | Recommended Dilution Ratios

**WB 1:500-2000**

**IHC 1:50-300**

**ELISA 1:2000-20000**

### | Storage

#### Storage\*

-15°C to -25°C/1 year (Do not lower than -25°C)

#### Formulation

Liquid in PBS containing 50% glycerol, 0.5% BSA and 0.02% sodium azide.

### | Basic Information

#### Clonality

Polyclonal

### | Immunogen Information

#### Immunogen

Synthesized peptide derived from Ribosomal Protein S18 . at AA range: 50-130

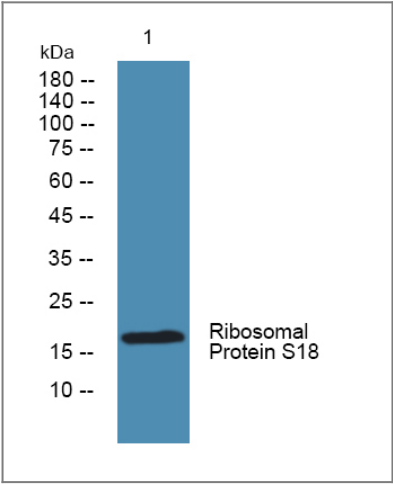
#### Specificity

Ribosomal Protein S18 Polyclonal Antibody detects endogenous levels of Ribosomal Protein S18 protein.

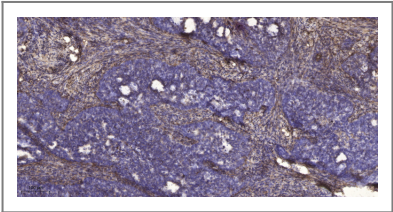
### | Target Information

Gene name	RPS18		
Protein Name	40S ribosomal protein S18		
	Organism	Gene ID	UniProt ID
	Human	<a href="#">6222</a> ;	<a href="#">P62269</a> ;
	Mouse	<a href="#">20084</a> ;	<a href="#">P62270</a> ;
	Rat	<a href="#">294282</a> ;	<a href="#">P62271</a> ;
Cellular Localization	Cytoplasm.		
Tissue specificity	Bone,Brain,Colon carcinoma,Embryonal rhabdomyosarcoma,Placenta,		
Function	Function:Located at the top of the head of the 40S subunit, it contacts several helices of the 18S rRNA.,similarity:Belongs to the ribosomal protein S13P family.,		

| Validation Data



Western blot analysis of lysates from KB cells, primary antibody was diluted at 1:1000, 4°over night



Immunohistochemical analysis of paraffin-embedded human cervical carcinoma. 1, Antibody was diluted at 1:200(4° overnight). 2, Tris-EDTA,pH9.0 was used for antigen retrieval. 3,Secondary antibody was diluted at 1:200(room temperature, 45min).

| Contact information

Orders: order.cn@immunoway.com  
Support: support.cn@immunoway.com  
Telephone: 400-8787-807(China)  
Website: <http://www.immunoway.com.cn>  
Address: 2200 Ringwood Ave San Jose, CA 95131 USA



Please scan the QR code  
to access additional  
product information:  
**Ribosomal Protein  
S18 Rabbit pAb**

---

For Research Use Only. Not for Use in Diagnostic Procedures.

[Antibody](#) | [ELISA Kits](#) | [Protein](#) | [Reagents](#)