

Ribosomal Protein S12 Rabbit pAb

CatalogNo: YT4122

| Key Features

Host Species

- Rabbit

Reactivity

- Human, Mouse, Rat

Applications

- WB, IHC, IF, ELISA

MW

- 15kD (Observed)

Isotype

- IgG

| Recommended Dilution Ratios

WB 1:500-1:2000

IHC 1:100-1:300

IF 1:200-1:1000

ELISA 1:40000

Not yet tested in other applications.

| Storage

Storage* -15°C to -25°C/1 year(Do not lower than -25°C)

Formulation Liquid in PBS containing 50% glycerol, 0.5% BSA and 0.02% sodium azide.

| Basic Information

Clonality Polyclonal

| Immunogen Information

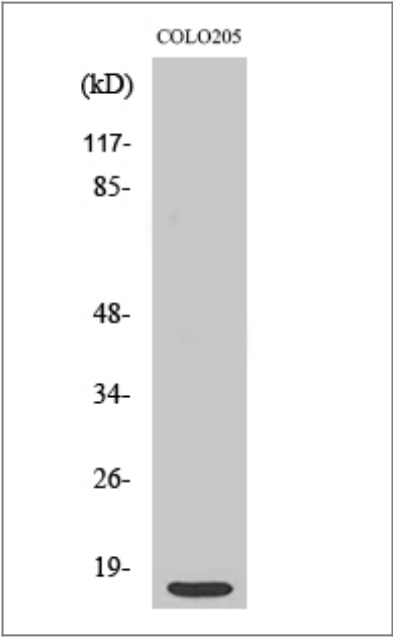
Immunogen The antiserum was produced against synthesized peptide derived from human RPS12. AA range:83-132

Specificity Ribosomal Protein S12 Polyclonal Antibody detects endogenous levels of Ribosomal Protein S12 protein.

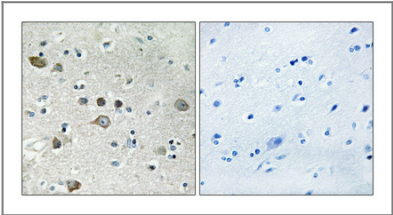
Target Information

Gene name	RPS12		
Protein Name	40S ribosomal protein S12		
	Organism	Gene ID	UniProt ID
	Human	6206 ;	P25398 ;
	Mouse		P63323 ;
	Rat		P63324 ;
Cellular Localization	Cytoplasm.		
Tissue specificity	Cervix carcinoma,Embryonic stem cell,Hepatoma,Mammary carcinoma,Placenta,Skin,Testi		
Function	similarity:Belongs to the ribosomal protein S12e family.,		

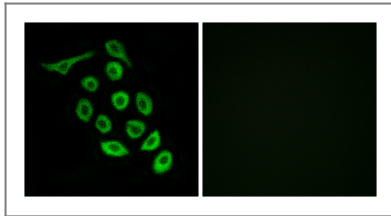
Validation Data



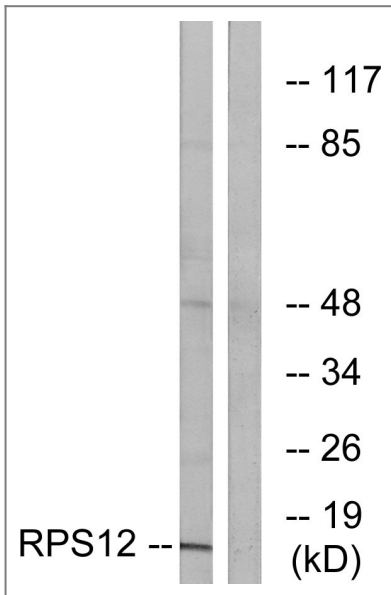
Western Blot analysis of various cells using Ribosomal Protein S12 Polyclonal Antibody



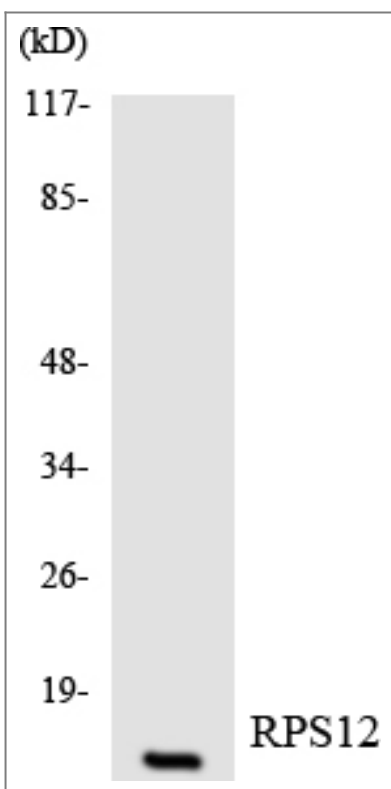
Immunohistochemical analysis of paraffin-embedded Human brain. Antibody was diluted at 1:100(4° overnight). High-pressure and temperature Tris-EDTA,pH8.0 was used for antigen retrieval. Negative ctrl (right) obtained from antibody was pre-absorbed by immunogen peptide.



Immunofluorescence analysis of A549 cells, using RPS12 Antibody. The picture on the right is blocked with the synthesized peptide.



Western blot analysis of lysates from COLO cells, using RPS12 Antibody. The lane on the right is blocked with the synthesized peptide.



Western blot analysis of the lysates from HUVEC cells using RPS12 antibody.

| Contact information

Orders: order.cn@immunoway.com
Support: support.cn@immunoway.com
Telephone: 400-8787-807(China)
Website: <http://www.immunoway.com.cn>
Address: 2200 Ringwood Ave San Jose, CA 95131 USA



Please scan the QR code
to access additional
product information:
**Ribosomal Protein
S12 Rabbit pAb**

For Research Use Only. Not for Use in Diagnostic Procedures.

[Antibody](#) | [ELISA Kits](#) | [Protein](#) | [Reagents](#)