

Ribosomal Protein L39L Rabbit pAb

CatalogNo: YT4114

Key Features

Host Species

- Rabbit

Reactivity

- Human, Mouse

Applications

- IHC, IF, ELISA

MW

- 6kD (Calculated)

Isotype

- IgG

Recommended Dilution Ratios

IHC 1:100-1:300

ELISA 1:40000

IF 1:50-200

Storage

Storage*

-15°C to -25°C/1 year (Do not lower than -25°C)

Formulation

Liquid in PBS containing 50% glycerol, 0.5% BSA and 0.02% sodium azide.

Basic Information

Clonality

Polyclonal

Immunogen Information

Immunogen

The antiserum was produced against synthesized peptide derived from human RPL39L. AA range: 1-50

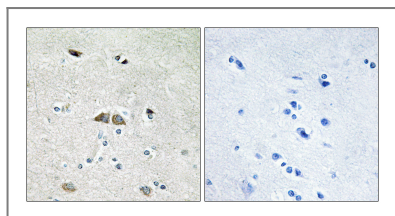
Specificity

Ribosomal Protein L39L Polyclonal Antibody detects endogenous levels of Ribosomal Protein L39L protein.

Target Information

Gene name	RPL39L		
Protein Name	60S ribosomal protein L39-like		
	Organism	Gene ID	UniProt ID
	Human	116832 ;	Q96EH5 ;
Cellular Localization	cytosolic large ribosomal subunit,		
Tissue specificity	Testis specific.		
Function	similarity:Belongs to the ribosomal protein L39e family.,tissue specificity:Testis specific.,		

Validation Data



Immunohistochemistry analysis of paraffin-embedded human brain, using RPL39L Antibody. The picture on the right is blocked with the synthesized peptide.

Contact information

Orders: order.cn@immunoway.com
 Support: support.cn@immunoway.com
 Telephone: 400-8787-807(China)
 Website: <http://www.immunoway.com.cn>
 Address: 2200 Ringwood Ave San Jose, CA 95131 USA



Please scan the QR code to access additional product information:
Ribosomal Protein L39L Rabbit pAb

For Research Use Only. Not for Use in Diagnostic Procedures.

[Antibody](#) | [ELISA Kits](#) | [Protein](#) | [Reagents](#)