

## Ribosomal Protein L36 Rabbit pAb

CatalogNo: YT4110

### Key Features

#### Host Species

- Rabbit

#### Reactivity

- Human, Mouse, Rat

#### Applications

- WB, IHC, IF, ELISA

#### MW

- 12kD (Observed)

#### Isotype

- IgG

### Recommended Dilution Ratios

**WB 1:500-1:2000**

**IHC 1:100-1:300**

**IF 1:200-1:1000**

**ELISA 1:40000**

**Not yet tested in other applications.**

### Storage

**Storage\*** -15°C to -25°C/1 year (Do not lower than -25°C)

**Formulation** Liquid in PBS containing 50% glycerol, 0.5% BSA and 0.02% sodium azide.

### Basic Information

**Clonality** Polyclonal

### Immunogen Information

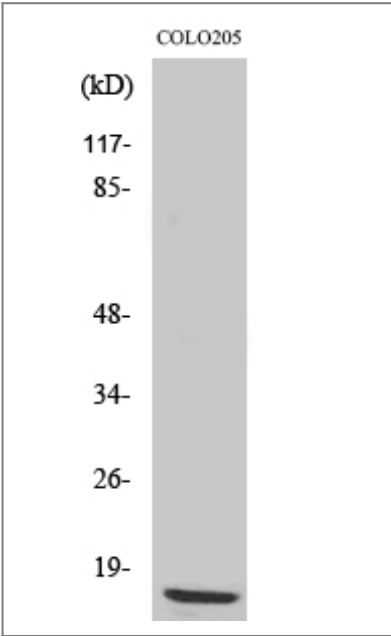
**Immunogen** The antiserum was produced against synthesized peptide derived from human RPL36. AA range: 51-100

**Specificity** Ribosomal Protein L36 Polyclonal Antibody detects endogenous levels of Ribosomal Protein L36 protein.

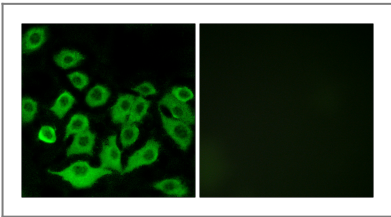
## Target Information

Gene name	RPL36		
Protein Name	60S ribosomal protein L36		
	Organism	Gene ID	UniProt ID
	Human	<a href="#">25873</a> ;	<a href="#">Q9Y3U8</a> ;
	Mouse		<a href="#">P47964</a> ;
	Rat	<a href="#">58927</a> ;	<a href="#">P39032</a> ;
Cellular Localization	Cytoplasm, cytosol . Cytoplasm . Detected on cytosolic polysomes (PubMed:25957688). .		
Tissue specificity	Blood,Kidney,Lung carcinoma,Skin,Umbilical cord blood,		
Function	Caution:Could be the product of a pseudogene.,similarity:Belongs to the ribosomal protein L36e family.,		

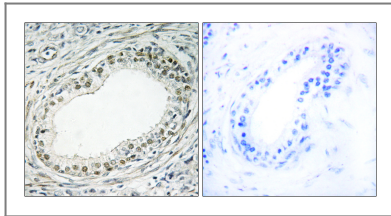
## Validation Data



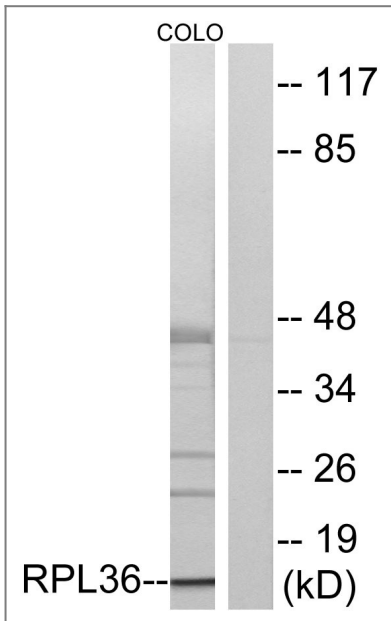
Western Blot analysis of various cells using Ribosomal Protein L36 Polyclonal Antibody diluted at 1:500



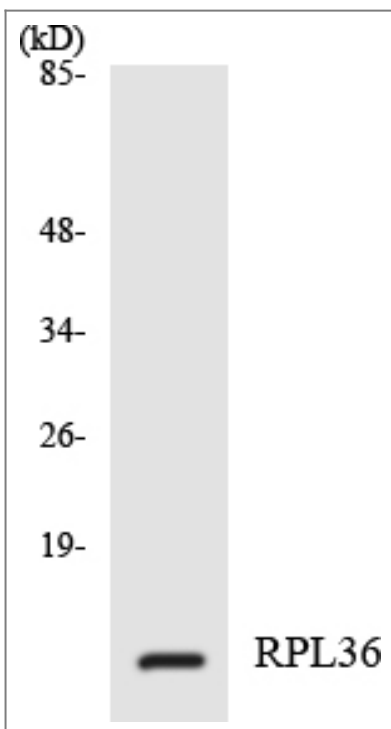
Immunofluorescence analysis of A549 cells, using RPL36 Antibody. The picture on the right is blocked with the synthesized peptide.



Immunohistochemistry analysis of paraffin-embedded human prostate carcinoma tissue, using RPL36 Antibody. The picture on the right is blocked with the synthesized peptide.



Western blot analysis of lysates from COLO cells, using RPL36 Antibody. The lane on the right is blocked with the synthesized peptide.



Western blot analysis of the lysates from 293 cells using RPL36 antibody.

## | Contact information

Orders: order.cn@immunoway.com  
Support: support.cn@immunoway.com  
Telephone: 400-8787-807(China)  
Website: <http://www.immunoway.com.cn>  
Address: 2200 Ringwood Ave San Jose, CA 95131 USA



Please scan the QR code  
to access additional  
product information:  
**Ribosomal Protein  
L36 Rabbit pAb**

---

For Research Use Only. Not for Use in Diagnostic Procedures.

[Antibody](#) | [ELISA Kits](#) | [Protein](#) | [Reagents](#)