

## Ribosomal Protein L28 Rabbit pAb

CatalogNo: YT4104

### Key Features

#### Host Species

- Rabbit

#### Reactivity

- Human, Mouse, Rat

#### Applications

- WB, IHC, IF, ELISA

#### MW

- 20kD (Observed)

#### Isotype

- IgG

### Recommended Dilution Ratios

**WB 1:500-1:2000**

**IHC 1:100-1:300**

**ELISA 1:20000**

**IF 1:50-200**

### Storage

#### Storage\*

-15°C to -25°C/1 year (Do not lower than -25°C)

#### Formulation

Liquid in PBS containing 50% glycerol, 0.5% BSA and 0.02% sodium azide.

### Basic Information

#### Clonality

Polyclonal

### Immunogen Information

#### Immunogen

The antiserum was produced against synthesized peptide derived from human RPL28. AA range: 41-90

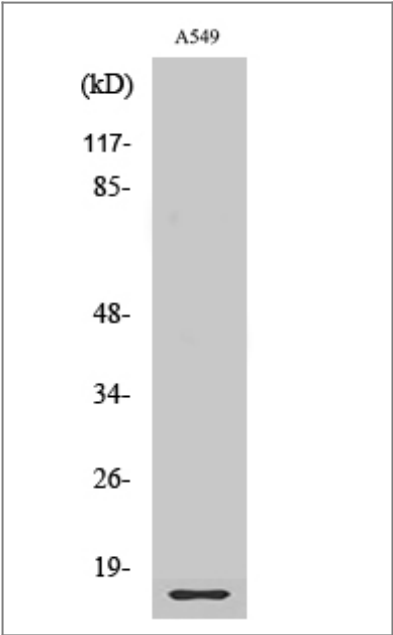
#### Specificity

Ribosomal Protein L28 Polyclonal Antibody detects endogenous levels of Ribosomal Protein L28 protein.

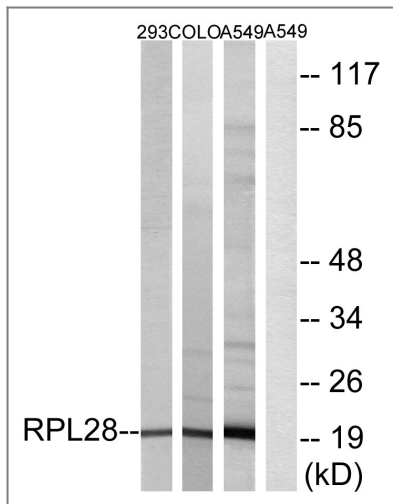
## | Target Information

Gene name	RPL28		
Protein Name	60S ribosomal protein L28		
	Organism	Gene ID	UniProt ID
	Human	<a href="#">6158</a> ;	<a href="#">P46779</a> ;
	Mouse	<a href="#">19943</a> ;	<a href="#">P41105</a> ;
	Rat		<a href="#">P17702</a> ;
Cellular Localization	cytoplasm,cytosol,ribosome,membrane,cytosolic large ribosomal subunit,dendrite,cytoplasmic ribonucleoprotein granule,cell body,extracellular exosome,		
Tissue specificity	B-cell,Cerebellum,Colon,Hepatoma,Kidney,Ovarian carcinoma,Spleen,Uterus,		
Function	similarity:Belongs to the ribosomal protein L28e family.,		

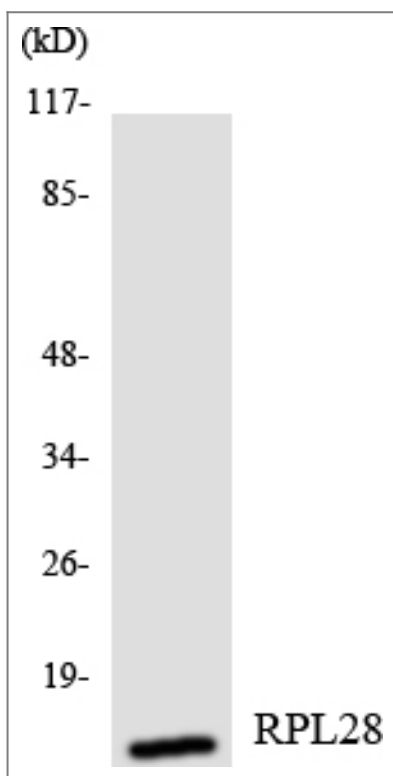
## | Validation Data



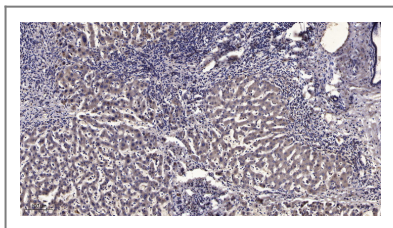
Western Blot analysis of various cells using Ribosomal Protein L28 Polyclonal Antibody diluted at 1:2000



Western blot analysis of lysates from A549, 293, and COLO cells, using RPL28 Antibody. The lane on the right is blocked with the synthesized peptide.



Western blot analysis of the lysates from HeLa cells using RPL28 antibody.



Immunohistochemical analysis of paraffin-embedded human liver cancer. 1, Antibody was diluted at 1:200(4° overnight). 2, Tris-EDTA,pH9.0 was used for antigen retrieval. 3,Secondary antibody was diluted at 1:200(room temperature, 45min).

## Contact information

Orders: order.cn@immunoway.com  
 Support: support.cn@immunoway.com  
 Telephone: 400-8787-807(China)  
 Website: <http://www.immunoway.com.cn>  
 Address: 2200 Ringwood Ave San Jose, CA 95131 USA



Please scan the QR code to access additional product information:  
**Ribosomal Protein L28 Rabbit pAb**

