

REXO1 Rabbit pAb

CatalogNo: YT4059

Key Features

Host Species

- Rabbit

Reactivity

- Human, Mouse

Applications

- IHC, IF, ELISA

MW

- 132kD (Calculated)

Isotype

- IgG

Recommended Dilution Ratios

IHC 1:100-1:300

ELISA 1:20000

IF 1:50-200

Storage

Storage* -15°C to -25°C/1 year (Do not lower than -25°C)

Formulation Liquid in PBS containing 50% glycerol, 0.5% BSA and 0.02% sodium azide.

Basic Information

Clonality Polyclonal

Immunogen Information

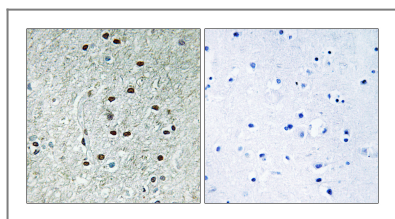
Immunogen The antiserum was produced against synthesized peptide derived from human REXO1. AA range: 185-234

Specificity REXO1 Polyclonal Antibody detects endogenous levels of REXO1 protein.

Target Information

Gene name	REXO1		
Protein Name	RNA exonuclease 1 homolog		
	Organism	Gene ID	UniProt ID
	Human	57455;	Q8N1G1;
	Mouse		Q7TT28;
Cellular Localization	Nucleus .		
Tissue specificity	Ubiquitously expressed.		
Function	Function:Seems to have no detectable effect on transcription elongation in vitro.,similarity:Belongs to the REXO1/REXO3 family.,similarity:Contains 1 exonuclease domain.,subunit:Interacts with TCEA2 and TCEB3.,tissue specificity:Ubiquitously expressed.,		

Validation Data



Immunohistochemistry analysis of paraffin-embedded human brain, using REXO1 Antibody. The picture on the right is blocked with the synthesized peptide.

Contact information

Orders: order.cn@immunoway.com
 Support: support.cn@immunoway.com
 Telephone: 400-8787-807(China)
 Website: <http://www.immunoway.com.cn>
 Address: 2200 Ringwood Ave San Jose, CA 95131 USA



Please scan the QR code to access additional product information:
REXO1 Rabbit pAb

For Research Use Only. Not for Use in Diagnostic Procedures.

[Antibody](#) | [ELISA Kits](#) | [Protein](#) | [Reagents](#)