

## Ras-GRF1 Rabbit pAb

CatalogNo: YT4009

### Key Features

#### Host Species

- Rabbit

#### Reactivity

- Mouse,Rat

#### Applications

- IHC,IF,WB,ELISA

#### MW

- 145kD (Calculated)

#### Isotype

- IgG

### Storage

**Storage\*** -15°C to -25°C/1 year(Do not lower than -25°C)

**Formulation** Liquid in PBS containing 50% glycerol, 0.5% BSA and 0.02% sodium azide.

### Recommended Dilution Ratios

**WB 1:500-2000**

**IHC 1:100-1:300**

**ELISA 1:5000**

**IF 1:50-200**

### Basic Information

**Clonality** Polyclonal

### Immunogen Information

**Immunogen** The antiserum was produced against synthesized peptide derived from human Ras-GRF1. AA range:882-931

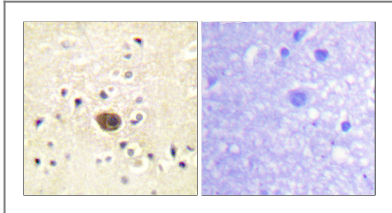
**Specificity** Ras-GRF1 Polyclonal Antibody detects endogenous levels of Ras-GRF1 protein.

### Target Information

**Gene name** RASGRF1 CDC25 GNRP GRF1  
**Protein Name** Ras-specific guanine nucleotide-releasing factor 1

Organism	Gene ID	UniProt ID
Human	<a href="#">5923</a> ;	<a href="#">Q13972</a> ;
Mouse	<a href="#">19417</a> ;	<a href="#">P27671</a> ;
Rat	<a href="#">192213</a> ;	<a href="#">P28818</a> ;

## Validation Data



Immunohistochemistry analysis of paraffin-embedded human brain tissue, using Ras-GRF1 Antibody. The picture on the right is blocked with the synthesized peptide.

## Contact information

Orders: [order.cn@immunoway.com](mailto:order.cn@immunoway.com)  
Support: [support.cn@immunoway.com](mailto:support.cn@immunoway.com)  
Telephone: 400-8787-807(China)  
Website: <http://www.immunoway.com.cn>  
Address: 2200 Ringwood Ave San Jose, CA 95131 USA



Please scan the QR code to access additional product information:  
**Ras-GRF1 Rabbit pAb**

For Research Use Only. Not for Use in Diagnostic Procedures.

[Antibody](#) | [ELISA Kits](#) | [Protein](#) | [Reagents](#)