

Rap1GAP Rabbit pAb

CatalogNo: YT4006

Key Features

Host Species

- Rabbit

Reactivity

- Human, Mouse

Applications

- WB, IHC, IF, ELISA

MW

- 73kD (Observed)

Isotype

- IgG

Recommended Dilution Ratios

WB 1:500-1:2000

IHC 1:100-1:300

ELISA 1:10000

IF 1:50-200

Storage

Storage*

-15°C to -25°C/1 year (Do not lower than -25°C)

Formulation

Liquid in PBS containing 50% glycerol, 0.5% BSA and 0.02% sodium azide.

Basic Information

Clonality

Polyclonal

Immunogen Information

Immunogen

Synthesized peptide derived from Rap1GAP . at AA range: 460-540

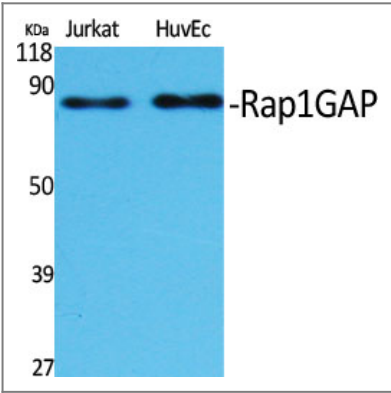
Specificity

Rap1GAP Polyclonal Antibody detects endogenous levels of Rap1GAP protein.

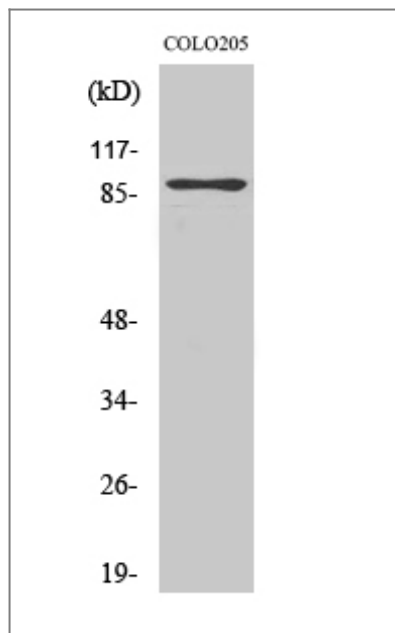
Target Information

Gene name	RAP1GAP		
Protein Name	Rap1 GTPase-activating protein 1		
	Organism	Gene ID	UniProt ID
	Human	5909 ;	P47736 ;
Cellular Localization	Golgi apparatus membrane; Peripheral membrane protein.		
Tissue specificity	Significant expression seen in the brain, kidney and pancreas. Abundant in the cerebral cortex and expressed at much lower levels in the spinal cord. Not detected in the lymphoid tissues.		
Function	Function:GTPase activator for the nuclear Ras-related regulatory protein RAP-1A (KREV-1), converting it to the putatively inactive GDP-bound state.,induction:By 12-O-tetradecanoylphorbol-13-acetate (TPA) in promyelocytic HL-60 cells.,similarity:Contains 1 GoLoco domain.,similarity:Contains 1 Rap-GAP domain.,tissue specificity:Significant expression seen in the brain, kidney and pancreas. Abundant in the cerebral cortex and expressed at much lower levels in the spinal cord. Not detected in the lymphoid tissues.,		

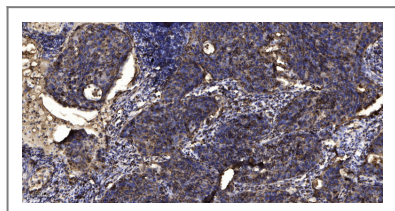
Validation Data



Western Blot analysis of various cells using Rap1GAP Polyclonal Antibody



Western Blot analysis of COLO205 cells using Rap1GAP Polyclonal Antibody



Immunohistochemical analysis of paraffin-embedded human Squamous cell carcinoma of lung. 1, Antibody was diluted at 1:200(4° overnight). 2, Tris-EDTA,pH9.0 was used for antigen retrieval. 3,Secondary antibody was diluted at 1:200(room temperature, 45min).

Contact information

Orders: order.cn@immunoway.com
 Support: support.cn@immunoway.com
 Telephone: 400-8787-807(China)
 Website: <http://www.immunoway.com.cn>
 Address: 2200 Ringwood Ave San Jose, CA 95131 USA



Please scan the QR code to access additional product information:
Rap1GAP Rabbit pAb

For Research Use Only. Not for Use in Diagnostic Procedures.

[Antibody](#) | [ELISA Kits](#) | [Protein](#) | [Reagents](#)