

RAP1 Rabbit pAb

CatalogNo: YT4005

Key Features

Host Species

- Rabbit

Reactivity

- Human,Rat,Mouse,

Applications

- WB,IHC

MW

- 55kD (Observed)

Isotype

- IgG

Recommended Dilution Ratios

WB 1:500-2000**IHC 1:50-300**

Storage

Storage*

-15°C to -25°C/1 year(Do not lower than -25°C)

Formulation

Liquid in PBS containing 50% glycerol, 0.5% BSA and 0.02% sodium azide.

Basic Information

Clonality

Polyclonal

Immunogen Information

Immunogen

The antiserum was produced against synthesized peptide derived from human RAP1. AA range:203-252

Specificity

RAP1 Polyclonal Antibody detects endogenous levels of RAP1 protein.

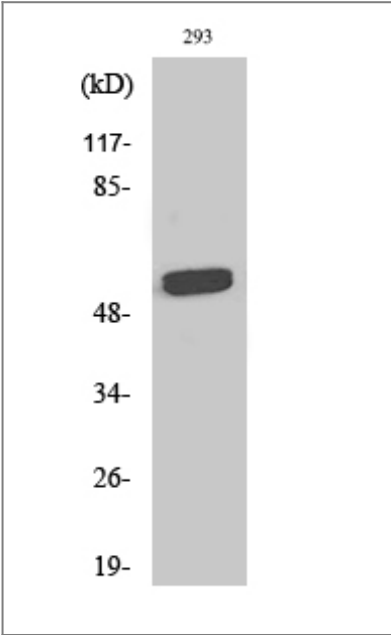
Target Information

Gene name

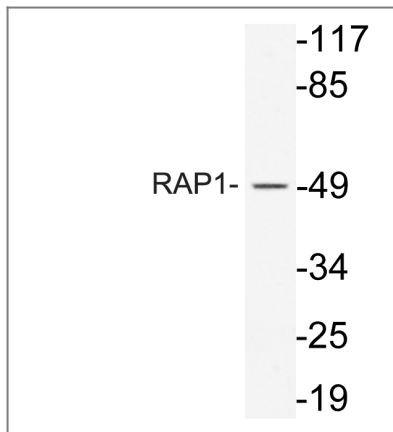
TERF2IP

Protein Name	Telomeric repeat-binding factor 2-interacting protein 1		
	Organism	Gene ID	UniProt ID
	Human	54386;	Q9NYB0;
	Mouse		Q91VL8;
Cellular Localization	Nucleus . Cytoplasm . Chromosome . Chromosome, telomere . Associates with chromosomes, both at telomeres and in extratelomeric sites. Also exists as a cytoplasmic form, where it associates with the IKK complex. .		
Tissue specificity	Ubiquitous. Highly expressed.		
Function	<p>Function:May play a role in telomere length regulation. Component of the shelterin complex (telosome) that is involved in the regulation of telomere length and protection. Shelterin associates with arrays of double-stranded TTAGGG repeats added by telomerase and protects chromosome ends; without its protective activity, telomeres are no longer hidden from the DNA damage surveillance and chromosome ends are inappropriately processed by DNA repair pathways.,miscellaneous:Recruited to telomeres by TRF2; seemingly it does not directly bind to DNA itself.,PTM:Phosphorylated upon DNA damage, probably by ATM or ATR.,sequence Caution:Translated as Glu.,similarity:Contains 1 BRCT domain.,similarity:Contains 1 Myb-like domain.,subcellular location:Colocalizes with telomeric DNA in interphase and metaphase cells.,subunit:Homodimer. Component of the shelterin complex (telosome) composed of TERF1, TERF2, TINF2, TERF2IP ACD and POT1. Binds to TRF2 (but not TRF1) with its C-terminus.,tissue specificity:Ubiquitous. Highly expressed.,</p>		

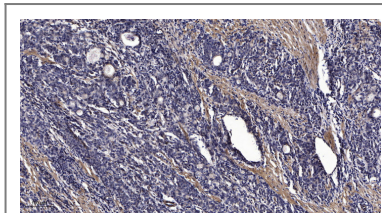
| Validation Data



Western Blot analysis of various cells using RAP1 Polyclonal Antibody diluted at 1:500



Western blot analysis of lysate from 293 cells, using RAP1 antibody.



Immunohistochemical analysis of paraffin-embedded human Gastric adenocarcinoma. 1, Antibody was diluted at 1:200(4° overnight). 2, Tris-EDTA, pH9.0 was used for antigen retrieval. 3, Secondary antibody was diluted at 1:200(room temperature, 45min).

Contact information

Orders: order.cn@immunoway.com
 Support: support.cn@immunoway.com
 Telephone: 400-8787-807(China)
 Website: <http://www.immunoway.com.cn>
 Address: 2200 Ringwood Ave San Jose, CA 95131 USA



Please scan the QR code to access additional product information:
RAP1 Rabbit pAb

For Research Use Only. Not for Use in Diagnostic Procedures.

[Antibody](#) | [ELISA Kits](#) | [Protein](#) | [Reagents](#)