

## Ran Rabbit pAb

CatalogNo: YT3998

### Key Features

#### Host Species

- Rabbit

#### Reactivity

- Human, Mouse, Rat

#### Applications

- WB, IHC, IF, ELISA

#### MW

- 25kD (Observed)

#### Isotype

- IgG

### Recommended Dilution Ratios

WB 1:500-1:2000

IHC 1:100-1:300

ELISA 1:10000

IF 1:50-200

### Storage

#### Storage\*

-15°C to -25°C/1 year (Do not lower than -25°C)

#### Formulation

Liquid in PBS containing 50% glycerol, 0.5% BSA and 0.02% sodium azide.

### Basic Information

#### Clonality

Polyclonal

### Immunogen Information

#### Immunogen

The antiserum was produced against synthesized peptide derived from human RAN. AA range: 167-216

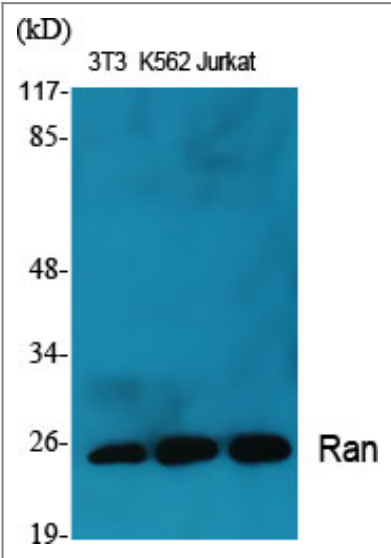
#### Specificity

Ran Polyclonal Antibody detects endogenous levels of Ran protein.

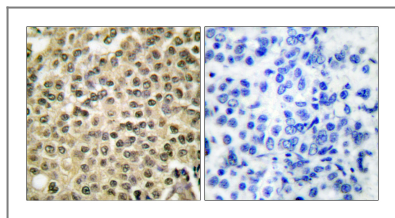
### Target Information

Gene name	RAN		
Protein Name	GTP-binding nuclear protein Ran		
	Organism	Gene ID	UniProt ID
	Human	<a href="#">5901</a> ;	<a href="#">P62826</a> ;
	Mouse	<a href="#">19384</a> ;	<a href="#">P62827</a> ;
	Rat	<a href="#">84509</a> ;	<a href="#">P62828</a> ;
Cellular Localization	Nucleus . Nucleus envelope . Cytoplasm, cytosol . Cytoplasm . Melanosome . Predominantly nuclear during interphase (PubMed:8421051, PubMed:12194828, PubMed:10679025). Becomes dispersed throughout the cytoplasm during mitosis (PubMed:8421051, PubMed:12194828). Identified by mass spectrometry in melanosome fractions from stage I to stage IV (PubMed:17081065). .		
Tissue specificity	Expressed in a variety of tissues.		
Function	Function:Enhances AR-mediated transactivation. Transactivation decreases as the poly-Gln length within AR increases.,Function:GTP-binding protein involved in nucleocytoplasmic transport. Required for the import of protein into the nucleus and also for RNA export. Involved in chromatin condensation and control of cell cycle.,PTM:The N-terminus is blocked.,similarity:Belongs to the small GTPase superfamily. Ran family.,subcellular location:Becomes dispersed throughout the cytoplasm during mitosis. Identified by mass spectrometry in melanosome fractions from stage I to stage IV.,subunit:Monomer. Also forms a complex with CHC1 and interacts with the AR N-terminal poly-Gln region. The interaction with AR is inversely correlated with the poly-Gln length. Part of a complex consisting of RANBP9, Ran, DYRK1B and COPS5. Found in a nuclear export complex with RANBP3 and XPO1. Component of a nuclear export receptor complex composed of KPNB1, Ran, SNUPN and XPO1. Found in a trimeric export complex with SNUPN, Ran and XPO1. Interacts with RANBP10. In case of HIV-1 infection, found in a complex with HIV-1 Rev, RNAs containing a Rev response element (RRE) and XPO1. Found in a complex with HTLV-1 Rex, RANBP3 and XPO1.,tissue specificity:Expressed in a variety of tissues.,		

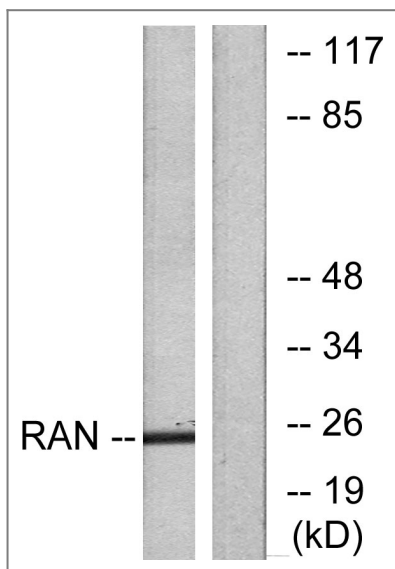
| Validation Data



Western Blot analysis of various cells using Ran Polyclonal Antibody diluted at 1:2000



Immunohistochemistry analysis of paraffin-embedded human breast carcinoma tissue, using RAN Antibody. The picture on the right is blocked with the synthesized peptide.



Western blot analysis of lysates from LOVO cells, using RAN Antibody. The lane on the right is blocked with the synthesized peptide.

## Contact information

Orders: order.cn@immunoway.com  
 Support: support.cn@immunoway.com  
 Telephone: 400-8787-807(China)  
 Website: <http://www.immunoway.com.cn>  
 Address: 2200 Ringwood Ave San Jose, CA 95131 USA



Please scan the QR code to access additional product information:  
**Ran Rabbit pAb**

For Research Use Only. Not for Use in Diagnostic Procedures.

[Antibody](#) | [ELISA Kits](#) | [Protein](#) | [Reagents](#)