

Raftlin Rabbit pAb

CatalogNo: YT3989

Key Features

Host Species

- Rabbit

Reactivity

- Human, Mouse

Applications

- WB, IHC

MW

- 65kD (Observed)

Isotype

- IgG

Recommended Dilution Ratios

WB 1:500-2000

IHC 1:50-300

Storage

Storage*

-15°C to -25°C/1 year (Do not lower than -25°C)

Formulation

Liquid in PBS containing 50% glycerol, 0.5% BSA and 0.02% sodium azide.

Basic Information

Clonality

Polyclonal

Immunogen Information

Immunogen

The antiserum was produced against synthesized peptide derived from human RFTN1. AA range: 432-481

Specificity

Raftlin Polyclonal Antibody detects endogenous levels of Raftlin protein.

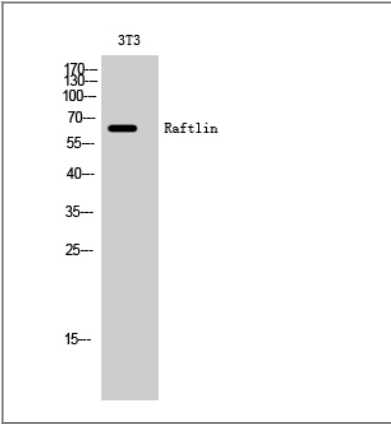
Target Information

Gene name

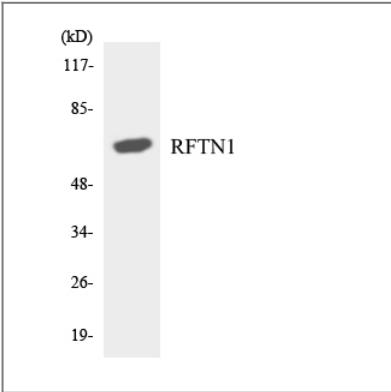
RFTN1

Protein Name	Raftlin		
	Organism	Gene ID	UniProt ID
	Human	23180;	Q14699;
	Mouse		Q6A0D4;
Cellular Localization	Cell membrane ; Lipid-anchor . Cytoplasm . Membrane raft . Endosome . Early endosome . Translocates from cytoplasm to cell membrane where it colocalizes with poly (I:C) and then moves to endosomes where it colocalizes with TLR3 (PubMed:21266579). Translocates from cytoplasm to cell membrane where it colocalizes with TLR4 and then together with TLR4 moves to endosomes, upon lipopolysaccharide stimulation (PubMed:27022195). .		
Tissue specificity	Expressed in B-cells (at protein level) (PubMed:12805216). Expressed in dendritic cells and macrophages (PubMed:27022195, PubMed:21266579).		
Function	Function:May play a pivotal role in the formation and/or maintenance of lipid rafts. May regulate B-cell antigen receptor-mediated signaling.,similarity:Belongs to the raftlin family.,subcellular location:Associates with lipid rafts.,tissue specificity:Specifically expressed by B-cells (at protein level),.		

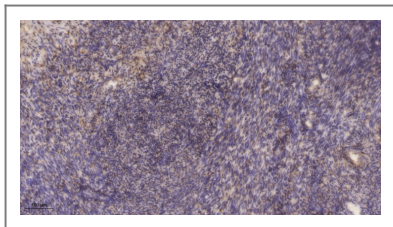
Validation Data



Western Blot analysis of 3T3 cells using Raftlin Polyclonal Antibody



Western blot analysis of the lysates from RAW264.7 cells using RFTN1 antibody.



Immunohistochemical analysis of paraffin-embedded human uterus. 1, Antibody was diluted at 1:200(4° overnight). 2, Tris-EDTA,pH9.0 was used for antigen retrieval. 3,Secondary antibody was diluted at 1:200(room temperature, 45min).

| Contact information

Orders: order.cn@immunoway.com
Support: support.cn@immunoway.com
Telephone: 400-8787-807(China)
Website: <http://www.immunoway.com.cn>
Address: 2200 Ringwood Ave San Jose, CA 95131 USA



Please scan the QR code
to access additional
product information:
Raftlin Rabbit pAb

For Research Use Only. Not for Use in Diagnostic Procedures.

[Antibody](#) | [ELISA Kits](#) | [Protein](#) | [Reagents](#)