

## Rabaptin-5 $\alpha$ Rabbit pAb

CatalogNo: YT3947

### Key Features

#### Host Species

- Rabbit

#### Reactivity

- Human, Mouse, Rat

#### Applications

- IHC, IF, ELISA

#### MW

- 99kD (Calculated)

#### Isotype

- IgG

### Recommended Dilution Ratios

IHC 1:100-1:300

ELISA 1:40000

IF 1:50-200

### Storage

**Storage\*** -15°C to -25°C/1 year (Do not lower than -25°C)

**Formulation** Liquid in PBS containing 50% glycerol, 0.5% BSA and 0.02% sodium azide.

### Basic Information

**Clonality** Polyclonal

### Immunogen Information

**Immunogen** The antiserum was produced against synthesized peptide derived from human RABEP1. AA range: 549-598

**Specificity** Rabaptin-5 $\alpha$  Polyclonal Antibody detects endogenous levels of Rabaptin-5 $\alpha$  protein.

### Target Information

**Gene name** RABEP1

**Protein Name** Rab GTPase-binding effector protein 1

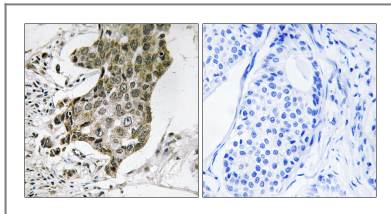
| Organism | Gene ID                | UniProt ID              |
|----------|------------------------|-------------------------|
| Human    | <a href="#">9135;</a>  | <a href="#">Q15276;</a> |
| Mouse    | <a href="#">54189;</a> | <a href="#">Q35551;</a> |
| Rat      | <a href="#">54190;</a> | <a href="#">Q35550;</a> |

**Cellular Localization** Cytoplasm. Early endosome. Recycling endosome. Cytoplasmic vesicle.

**Tissue specificity** Cervix carcinoma,Epithelium,Fetal brain cortex,Kidney,Plate

**Function** Function:Rab effector protein acting as linker between gamma-adaptin, RAB4A and RAB5A. Involved in endocytic membrane fusion and membrane trafficking of recycling endosomes. Stimulates RABGEF1 mediated nucleotide exchange on RAB5A.,PTM:Proteolytic cleavage by caspases in apoptotic cells causes loss of endosome fusion activity.,similarity:Belongs to the rabaptin family.,subunit:Heterodimer with RABGEF1. The heterodimer binds RAB4A and RAB5A that have been activated by GTP-binding. Binds TSC2, GGA1, GGA2, GGA3, AP1G1 and AP1G2.,

## Validation Data



Immunohistochemistry analysis of paraffin-embedded human breast carcinoma tissue, using RABEP1 Antibody. The picture on the right is blocked with the synthesized peptide.

## Contact information

Orders: order.cn@immunoway.com  
Support: support.cn@immunoway.com  
Telephone: 400-8787-807(China)  
Website: <http://www.immunoway.com.cn>  
Address: 2200 Ringwood Ave San Jose, CA 95131 USA



Please scan the QR code to access additional product information:  
**Rabaptin-5α Rabbit pAb**