

## Rab11-FIP3 Rabbit pAb

CatalogNo: YT3944

### | Key Features

#### Host Species

- Rabbit

#### Reactivity

- Human, Mouse, Rat

#### Applications

- IHC, IF, ELISA

#### MW

- 82kD (Calculated)

#### Isotype

- IgG

### | Recommended Dilution Ratios

IHC 1:100-1:300

ELISA 1:10000

IF 1:50-200

### | Storage

**Storage\*** -15°C to -25°C/1 year (Do not lower than -25°C)

**Formulation** Liquid in PBS containing 50% glycerol, 0.5% BSA and 0.02% sodium azide.

### | Basic Information

**Clonality** Polyclonal

### | Immunogen Information

**Immunogen** The antiserum was produced against synthesized peptide derived from human RAB11FIP3. AA range: 569-618

**Specificity** Rab11-FIP3 Polyclonal Antibody detects endogenous levels of Rab11-FIP3 protein.

### | Target Information

**Gene name** RAB11FIP3

**Protein Name** Rab11 family-interacting protein 3

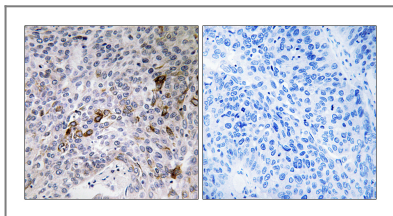
Organism	Gene ID	UniProt ID
Human	<a href="#">9727;</a>	<a href="#">O75154;</a>
Mouse	<a href="#">215445;</a>	<a href="#">Q8CHD8;</a>

**Cellular Localization** Recycling endosome membrane ; Peripheral membrane protein. Cytoplasm, cytoskeleton, microtubule organizing center, centrosome . Cleavage furrow . Midbody . In early mitosis remains diffuse and distributed through the cell. The onset of anaphase sequesters these vesicles to the centrosomes at the opposite poles of the cell. During telophase these vesicles move from the centrosomes, to the furrow, and then to the midbody to aid in abscission (PubMed:15158446, PubMed:15601896, PubMed:18511905). Interaction with Rab11 mediates localization to endosomes (PubMed:11495908). Interaction with ARF6 mediates localization to the midbody (PubMed:16148947). .

**Tissue specificity** Brain,Ovary,

**Function** similarity:Contains 2 EF-hand domains.,subcellular location:Colocalizes with RAB11A at recycling endosomes.,subunit:Forms an heterooligomeric complex with RAB11FIP4. Binds to RAB11A, RAB11B and RAB25.,

## Validation Data



Immunohistochemistry analysis of paraffin-embedded human lung carcinoma tissue, using RAB11FIP3 Antibody. The picture on the right is blocked with the synthesized peptide.

## Contact information

Orders: order.cn@immunoway.com  
Support: support.cn@immunoway.com  
Telephone: 400-8787-807(China)  
Website: <http://www.immunoway.com.cn>  
Address: 2200 Ringwood Ave San Jose, CA 95131 USA



Please scan the QR code to access additional product information:  
**Rab11-FIP3 Rabbit pAb**