

## Rab 38 Rabbit pAb

CatalogNo: YT3933

### Key Features

#### Host Species

- Rabbit

#### Reactivity

- Human, Mouse, Rat

#### Applications

- WB, IHC

#### MW

- 26kD (Observed)

#### Isotype

- IgG

### Recommended Dilution Ratios

WB 1:500-2000

IHC 1:50-300

### Storage

#### Storage\*

-15°C to -25°C/1 year (Do not lower than -25°C)

#### Formulation

Liquid in PBS containing 50% glycerol, 0.5% BSA and 0.02% sodium azide.

### Basic Information

#### Clonality

Polyclonal

### Immunogen Information

#### Immunogen

The antiserum was produced against synthesized peptide derived from human RAB38. AA range: 80-129

#### Specificity

Rab 38 Polyclonal Antibody detects endogenous levels of Rab 38 protein.

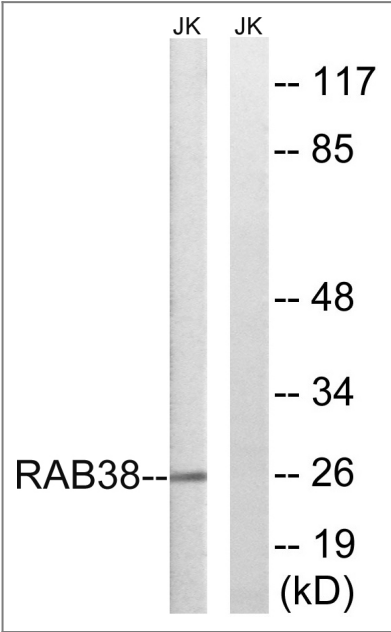
### Target Information

#### Gene name

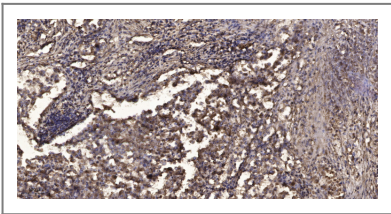
RAB38

<b>Protein Name</b>	Ras-related protein Rab-38		
	<b>Organism</b>	<b>Gene ID</b>	<b>UniProt ID</b>
	Human	<a href="#">23682;</a>	<a href="#">P57729;</a>
	Mouse	<a href="#">72433;</a>	<a href="#">Q8QZZ8;</a>
<b>Cellular Localization</b>	Cell membrane ; Lipid-anchor ; Cytoplasmic side . Melanosome . Cytoplasmic vesicle, phagosome . Cytoplasmic vesicle, phagosome membrane ; Lipid-anchor ; Cytoplasmic side . Melanosome membrane . Recruited to phagosomes containing S.aureus or M.tuberculosis (PubMed:21255211). The BLOC-3 complex, a heterodimer of HPS1 and HPS4 promotes its membrane localization (PubMed:23084991). .		
<b>Tissue specificity</b>	Expressed in melanocytes.		
<b>Function</b>	Function:May be involved in melanosomal transport and docking. Involved in the proper sorting of TYRP1.,PTM:Although at least one in vitro system can process and methylate the prenylated C-terminal, in an in vitro system that normally express Rab-38 and in vivo the prenylated C-terminal is not proteolytically processed and not methylated.,similarity:Belongs to the small GTPase superfamily. Rab family.,tissue specificity:Expressed in melanocytes.,		

Validation Data



Western blot analysis of lysates from Jurkat cells, using RAB38 Antibody. The lane on the right is blocked with the synthesized peptide.



Immunohistochemical analysis of paraffin-embedded human Squamous cell carcinoma of lung. 1, Antibody was diluted at 1:200(4° overnight). 2, Tris-EDTA,pH9.0 was used for antigen retrieval. 3,Secondary antibody was diluted at 1:200(room temperature, 45min).

## | Contact information

Orders: order.cn@immunoway.com  
Support: support.cn@immunoway.com  
Telephone: 400-8787-807(China)  
Website: <http://www.immunoway.com.cn>  
Address: 2200 Ringwood Ave San Jose, CA 95131 USA



Please scan the QR code  
to access additional  
product information:

**Rab 38 Rabbit pAb**

---

For Research Use Only. Not for Use in Diagnostic Procedures.

[Antibody](#) | [ELISA Kits](#) | [Protein](#) | [Reagents](#)