

## Rab 3 GAP p150 Rabbit pAb

CatalogNo: YT3927

### Key Features

#### Host Species

- Rabbit

#### Reactivity

- Human, Mouse, Rat, Monkey

#### Applications

- WB, IHC, IF, ELISA

#### MW

- 156kD (Observed)

#### Isotype

- IgG

### Recommended Dilution Ratios

**WB 1:500-1:2000**

**IHC 1:100-1:300**

**ELISA 1:40000**

**IF 1:50-200**

### Storage

#### Storage\*

-15°C to -25°C/1 year (Do not lower than -25°C)

#### Formulation

Liquid in PBS containing 50% glycerol, 0.5% BSA and 0.02% sodium azide.

### Basic Information

#### Clonality

Polyclonal

### Immunogen Information

#### Immunogen

The antiserum was produced against synthesized peptide derived from human RAB3GAP2. AA range: 417-466

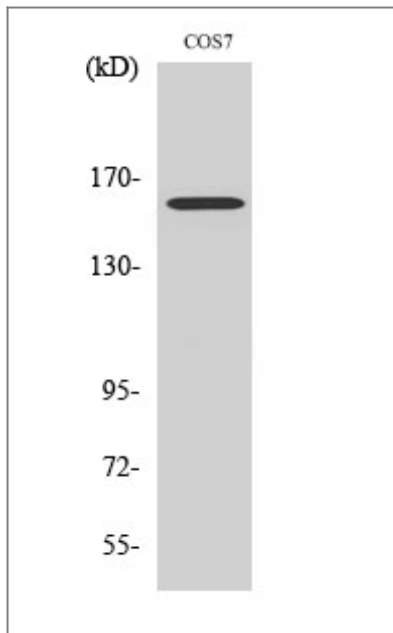
#### Specificity

Rab 3 GAP p150 Polyclonal Antibody detects endogenous levels of Rab 3 GAP p150 protein.

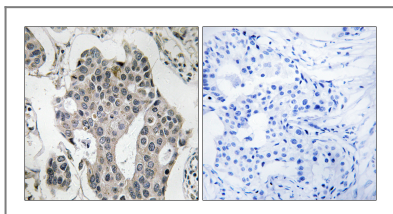
## | Target Information

Gene name	RAB3GAP2		
Protein Name	Rab3 GTPase-activating protein non-catalytic subunit		
	Organism	Gene ID	UniProt ID
	Human	<a href="#">25782</a> ;	<a href="#">Q9H2M9</a> ;
	Mouse	<a href="#">98732</a> ;	<a href="#">Q8BMG7</a> ;
	Rat	<a href="#">289350</a> ;	<a href="#">Q5U1Z0</a> ;
Cellular Localization	Cytoplasm. In neurons, it is enriched in the synaptic soluble fraction.		
Tissue specificity	Ubiquitous.		
Function	Disease:Defects in RAB3GAP2 are the cause of Martsolf syndrome [MIM:212720]. Martsolf syndrome is characterized by congenital cataracts, mental retardation, and hypogonadism. Inheritance is autosomal recessive.,Function:Regulatory subunit of a GTPase activating protein that has specificity for Rab3 subfamily (RAB3A, RAB3B, RAB3C and RAB3D). Rab3 proteins are involved in regulated exocytosis of neurotransmitters and hormones. Rab3 GTPase-activating complex specifically converts active Rab3-GTP to the inactive form Rab3-GDP. Required for normal eye and brain development. May participate in neurodevelopmental processes such as proliferation, migration and differentiation before synapse formation, and non-synaptic vesicular release of neurotransmitters.,similarity:Belongs to the Rab3-GAP regulatory subunit family.,subcellular location:In neurons, it is enriched in the synaptic soluble fraction.,subunit:The Rab3 GTPase-activating complex is a heterodimer composed of RAB3GAP and RAB3-GAP150. The Rab3 GTPase-activating complex interacts with DMXL2.,tissue specificity:Ubiquitous.,		

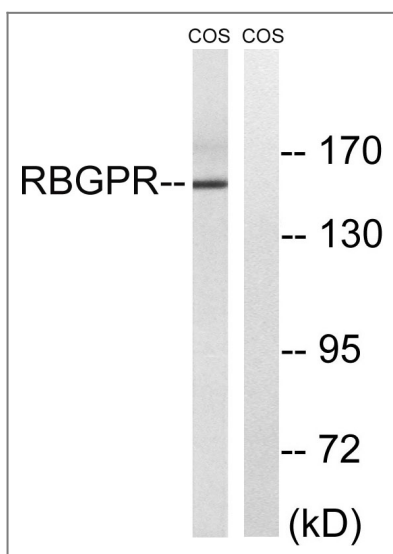
## | Validation Data



Western Blot analysis of various cells using Rab 3 GAP p150 Polyclonal Antibody



Immunohistochemistry analysis of paraffin-embedded human breast carcinoma tissue, using RAB3GAP2 Antibody. The picture on the right is blocked with the synthesized peptide.



Western blot analysis of lysates from COS cells, using RAB3GAP2 Antibody. The lane on the right is blocked with the synthesized peptide.

## Contact information

Orders: order.cn@immunoway.com  
 Support: support.cn@immunoway.com  
 Telephone: 400-8787-807(China)  
 Website: <http://www.immunoway.com.cn>  
 Address: 2200 Ringwood Ave San Jose, CA 95131 USA



Please scan the QR code to access additional product information:  
**Rab 3 GAP p150**  
**Rabbit pAb**

