

PTP22 Rabbit pAb

CatalogNo: YT3901

Key Features

Host Species

- Rabbit

Reactivity

- Human, Mouse, Rat

Applications

- WB, IHC

MW

- 91kD (Observed)

Isotype

- IgG

Recommended Dilution Ratios

WB 1:500-2000

IHC 1:50-300

Storage

Storage*

-15°C to -25°C/1 year (Do not lower than -25°C)

Formulation

Liquid in PBS containing 50% glycerol, 0.5% BSA and 0.02% sodium azide.

Basic Information

Clonality

Polyclonal

Immunogen Information

Immunogen

Synthesized peptide derived from the N-terminal region of human PTP22.

Specificity

PTP22 Polyclonal Antibody detects endogenous levels of PTP22 protein.

Target Information

Gene name

PTPN22

Protein Name Tyrosine-protein phosphatase non-receptor type 22

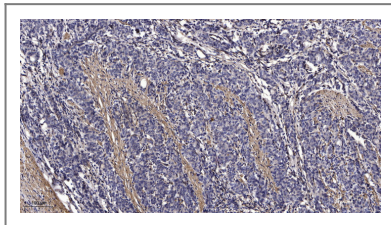
Organism	Gene ID	UniProt ID
Human	26191 ;	Q9Y2R2 ;
Mouse	19260 ;	P29352 ;

Cellular Localization Cytoplasm .

Tissue specificity Expressed in bone marrow, B and T-cells, PBMCs, natural killer cells, monocytes, dendritic cells and neutrophils (PubMed:15208781). Both isoform 1 and 4 are predominantly expressed in lymphoid tissues and cells. Isoform 1 is expressed in thymocytes and both mature B and T-cells.

Function Catalytic activity:Protein tyrosine phosphate + H(2)O = protein tyrosine + phosphate.,Function:Seems to act on Cbl. May play a role in regulating the function of Cbl and its associated protein kinases.,similarity:Belongs to the protein-tyrosine phosphatase family. Non-receptor class 4 subfamily.,similarity:Contains 1 tyrosine-protein phosphatase domain.,tissue specificity:Predominantly expressed in lymphoid tissues and cells. Isoform 1 is expressed in thymocytes and both mature B and T-cells.,

Validation Data



Immunohistochemical analysis of paraffin-embedded human Gastric adenocarcinoma. 1, Antibody was diluted at 1:200(4° overnight). 2, Tris-EDTA,pH9.0 was used for antigen retrieval. 3,Secondary antibody was diluted at 1:200(room temperature, 45min).

Contact information

Orders: order.cn@immunoway.com
Support: support.cn@immunoway.com
Telephone: 400-8787-807(China)
Website: <http://www.immunoway.com.cn>
Address: 2200 Ringwood Ave San Jose, CA 95131 USA



Please scan the QR code to access additional product information:
PTP22 Rabbit pAb