

## PTG Rabbit pAb

CatalogNo: YT3895

### | Key Features

#### Host Species

- Rabbit

#### Reactivity

- Human, Monkey

#### Applications

- WB, IHC, IF, ELISA

#### MW

- 36kD (Observed)

#### Isotype

- IgG

### | Recommended Dilution Ratios

**WB 1:500-1:2000**

**IHC 1:100-1:300**

**ELISA 1:20000**

**IF 1:50-200**

### | Storage

#### Storage\*

-15°C to -25°C/1 year(Do not lower than -25°C)

#### Formulation

Liquid in PBS containing 50% glycerol, 0.5% BSA and 0.02% sodium azide.

### | Basic Information

#### Clonality

Polyclonal

### | Immunogen Information

#### Immunogen

The antiserum was produced against synthesized peptide derived from human PPP1R3C. AA range:44-93

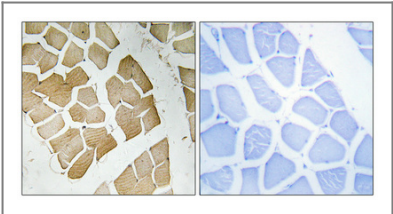
#### Specificity

PTG Polyclonal Antibody detects endogenous levels of PTG protein.

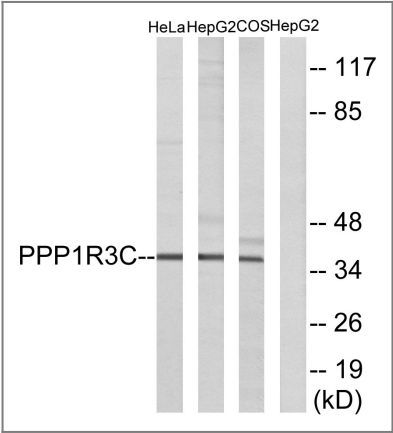
### | Target Information

Gene name	PPP1R3C		
Protein Name	Protein phosphatase 1 regulatory subunit 3C		
	Organism	Gene ID	UniProt ID
	Human	<a href="#">5507</a> ;	<a href="#">Q9UQK1</a> ;
	Mouse		<a href="#">Q7TMB3</a> ;
Cellular Localization	cytosol,		
Tissue specificity	Gall bladder,Retina,Skeletal muscle,		
Function	<p>Domain:The N-terminal region is required for binding to PP1, the central region is required for binding to glycogen and the C-terminal region is required for binding to glycogen phosphorylase, glycogen synthase and phosphorylase kinase.,Function:Acts as a glycogen-targeting subunit for PP1 and regulates its activity. Activates glycogen synthase, reduces glycogen phosphorylase activity and limits glycogen breakdown. Dramatically increases basal and insulin-stimulated glycogen synthesis upon overexpression in a variety of cell types.,similarity:Contains 1 CBM21 (carbohydrate binding type-21) domain.,subunit:Interacts with PPP1CC catalytic subunit of PP1 and associates with glycogen. Forms complexes with glycogen phosphorylase, glycogen synthase and phosphorylase kinase which is necessary for its regulation of PP1 activity. Also interacts with EPM2A/laforin.,</p>		

Validation Data



Immunohistochemical analysis of paraffin-embedded Human skeletal muscle. Antibody was diluted at 1:100(4° overnight). High-pressure and temperature Tris-EDTA,pH8.0 was used for antigen retrieval. Negetive contrl (right) obtaned from antibody was pre-absorbed by immunogen peptide.



Western blot analysis of lysates from HepG2, HeLa, and COS7 cells, using PPP1R3C Antibody. The lane on the right is blocked with the synthesized peptide.

Contact information

Orders: order.cn@immunoway.com  
Support: support.cn@immunoway.com  
Telephone: 400-8787-807(China)  
Website: <http://www.immunoway.com.cn>  
Address: 2200 Ringwood Ave San Jose, CA 95131 USA



Please scan the QR code  
to access additional  
product information:  
**PTG Rabbit pAb**

---

For Research Use Only. Not for Use in Diagnostic Procedures.

[Antibody](#) | [ELISA Kits](#) | [Protein](#) | [Reagents](#)