

PSMD2 Rabbit pAb

CatalogNo: YT3888

Key Features

Host Species

- Rabbit

Reactivity

- Human, Mouse, Rat

Applications

- WB, IHC, IF, ELISA

MW

- 100kD (Observed)

Isotype

- IgG

Recommended Dilution Ratios

WB 1:500-1:2000

IHC 1:100-1:300

IF 1:200-1:1000

ELISA 1:20000

Not yet tested in other applications.

Storage

Storage* -15°C to -25°C/1 year (Do not lower than -25°C)

Formulation Liquid in PBS containing 50% glycerol, 0.5% BSA and 0.02% sodium azide.

Basic Information

Clonality Polyclonal

Immunogen Information

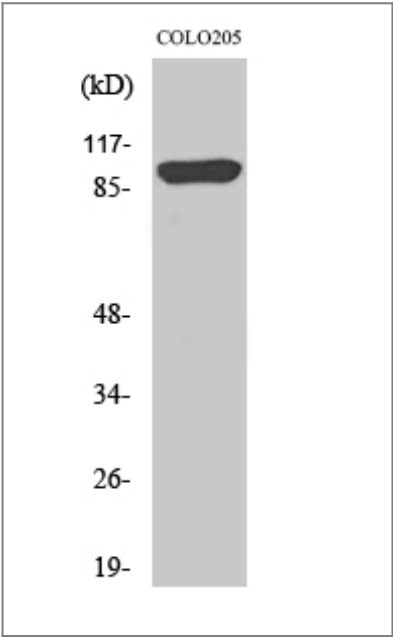
Immunogen The antiserum was produced against synthesized peptide derived from human PSMD2. AA range: 101-150

Specificity PSMD2 Polyclonal Antibody detects endogenous levels of PSMD2 protein.

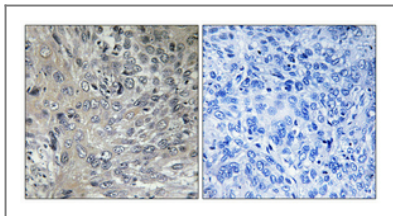
| Target Information

Gene name	PSMD2		
Protein Name	26S proteasome non-ATPase regulatory subunit 2		
	Organism	Gene ID	UniProt ID
	Human	5708 ;	Q13200 ;
	Mouse	21762 ;	Q8VDM4 ;
	Rat	287984 ;	Q4FZT9 ;
Cellular Localization	proteasome complex,nucleus,nucleoplasm,cytosol,proteasome regulatory particle,proteasome regulatory particle, base subcomplex,membrane,proteasome accessory complex,proteasome storage granule,extracellular exosome,		
Tissue specificity	Found in skeletal muscle, liver, heart, brain, kidney, pancreas, lung and placenta.		
Function	Function:Acts as a regulatory subunit of the 26 proteasome which is involved in the ATP-dependent degradation of ubiquitinated proteins.,Function:Binds to the intracellular domain of tumor necrosis factor type 1 receptor. The binding domain of TRAP1 and TRAP2 resides outside the death domain of TNFR1.,similarity:Belongs to the proteasome subunit S2 family.,similarity:Contains 7 PC repeats.,tissue specificity:Found in skeletal muscle, liver, heart, brain, kidney, pancreas, lung and placenta.,		

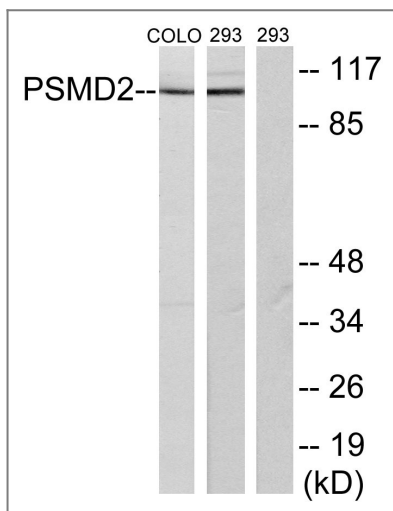
| Validation Data



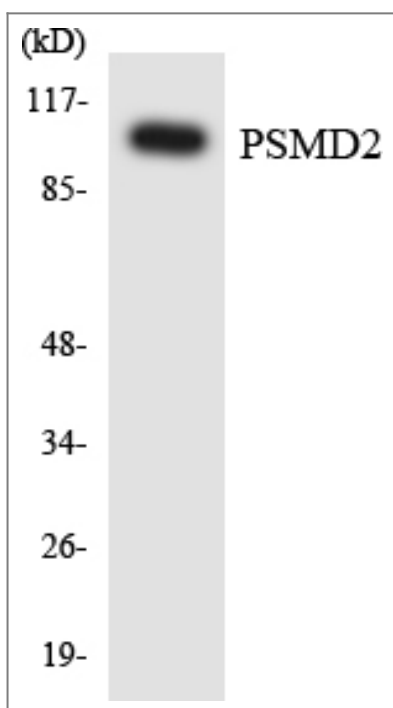
Western Blot analysis of 293 cells using PSMD2 Polyclonal Antibody



Immunohistochemical analysis of paraffin-embedded Human cervix cancer. Antibody was diluted at 1:100(4° overnight). High-pressure and temperature Tris-EDTA,pH8.0 was used for antigen retrieval. Negative control (right) obtained from antibody was pre-absorbed by immunogen peptide.



Western blot analysis of lysates from COLO205 and 293 cells, using PSMD2 Antibody. The lane on the right is blocked with the synthesized peptide.



Western blot analysis of the lysates from HepG2 cells using PSMD2 antibody.

Contact information

Orders: order.cn@immunoway.com
 Support: support.cn@immunoway.com
 Telephone: 400-8787-807(China)
 Website: <http://www.immunoway.com.cn>
 Address: 2200 Ringwood Ave San Jose, CA 95131 USA



Please scan the QR code to access additional product information:
PSMD2 Rabbit pAb

