

PRIM1 Rabbit pAb

CatalogNo: YT3858

Key Features

Host Species

- Rabbit

Reactivity

- Human, Mouse, Rat

Applications

- WB, IHC, IF, ELISA

MW

- 50kD (Observed)

Isotype

- IgG

Recommended Dilution Ratios

WB 1:500-1:2000

IHC 1:100-1:300

ELISA 1:10000

IF 1:50-200

Storage

Storage*

-15°C to -25°C/1 year (Do not lower than -25°C)

Formulation

Liquid in PBS containing 50% glycerol, 0.5% BSA and 0.02% sodium azide.

Basic Information

Clonality

Polyclonal

Immunogen Information

Immunogen

The antiserum was produced against synthesized peptide derived from human PRIM1. AA range: 371-420

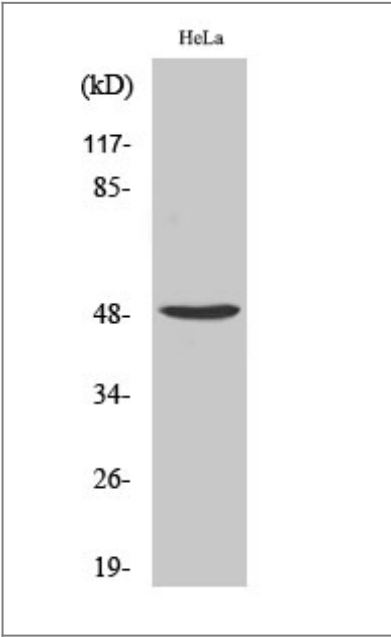
Specificity

PRIM1 Polyclonal Antibody detects endogenous levels of PRIM1 protein.

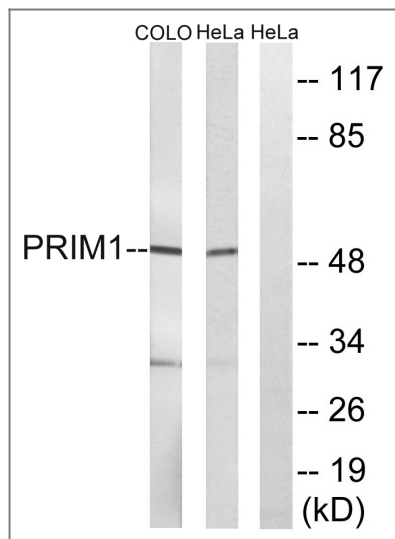
Target Information

Gene name	PRIM1		
Protein Name	DNA primase small subunit		
	Organism	Gene ID	UniProt ID
	Human	5557 ;	P49642 ;
	Mouse	19075 ;	P20664 ;
Cellular Localization	nucleoplasm,alpha DNA polymerase:primase complex,membrane,primosome complex,		
Tissue specificity	Bone marrow,Thymus,		
Function	Function:DNA primase is the polymerase that synthesizes small RNA primers for the Okazaki fragments made during discontinuous DNA replication.,miscellaneous:The bound zinc ion is not a cofactor. It is bound to a zinc knuckle motif that may be involved in sequence recognition and the binding of ssDNA.,similarity:Belongs to the eukaryotic-type primase small subunit family.,subunit:Heterodimer of a small subunit and a large subunit.,		

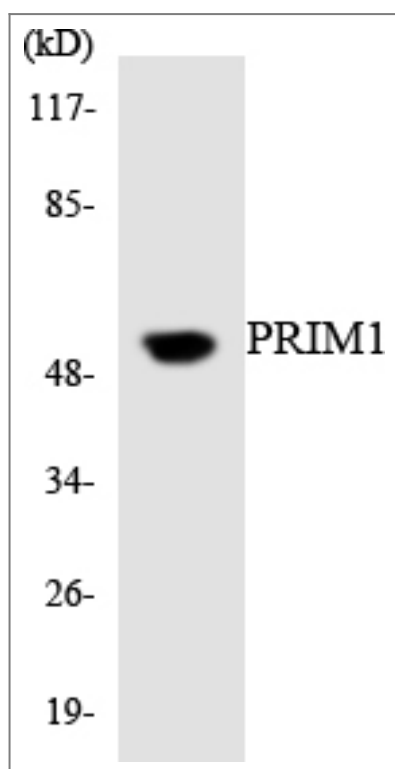
| Validation Data



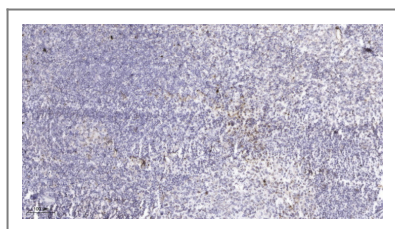
Western Blot analysis of various cells using PRIM1 Polyclonal Antibody cells nucleus extracted by Minute TM Cytoplasmic and Nuclear Fractionation kit (SC-003,Inventbiotech,MN,USA).



Western blot analysis of lysates from COLO and HeLa cells, using PRIM1 Antibody. The lane on the right is blocked with the synthesized peptide.



Western blot analysis of the lysates from K562 cells using PRIM1 antibody.



Immunohistochemical analysis of paraffin-embedded human tonsil. 1, Antibody was diluted at 1:200(4° overnight). 2, Tris-EDTA,pH9.0 was used for antigen retrieval. 3,Secondary antibody was diluted at 1:200(room temperature, 45min).

Contact information

Orders: order.cn@immunoway.com
 Support: support.cn@immunoway.com
 Telephone: 400-8787-807(China)
 Website: <http://www.immunoway.com.cn>
 Address: 2200 Ringwood Ave San Jose, CA 95131 USA



Please scan the QR code to access additional product information:
PRIM1 Rabbit pAb

