

PP2A-B56- α Rabbit pAb

CatalogNo: YT3828

Key Features

Host Species

- Rabbit

Reactivity

- Human, Mouse, Rat

Applications

- WB, IHC

MW

- 57kD (Observed)

Isotype

- IgG

Recommended Dilution Ratios

WB 1:500-2000

IHC 1:50-300

Storage

Storage*

-15°C to -25°C/1 year (Do not lower than -25°C)

Formulation

Liquid in PBS containing 50% glycerol, 0.5% BSA and 0.02% sodium azide.

Basic Information

Clonality

Polyclonal

Immunogen Information

Immunogen

The antiserum was produced against synthesized peptide derived from human PPP2R5A. AA range: 321-370

SpecificityPP2A-B56- α Polyclonal Antibody detects endogenous levels of PP2A-B56- α protein.

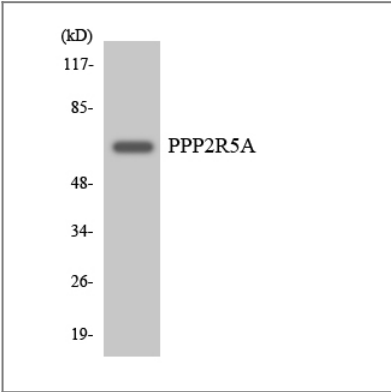
Target Information

Gene name

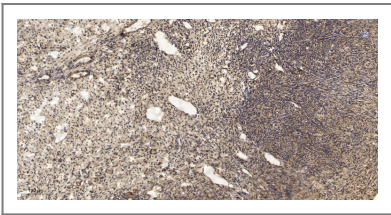
PPP2R5A

Protein Name	Serine/threonine-protein phosphatase 2A 56 kDa regulatory subunit alpha isoform		
	Organism	Gene ID	UniProt ID
	Human	5525;	Q15172;
	Mouse	226849;	Q6PD03;
Cellular Localization	Cytoplasm . Nucleus . Chromosome, centromere . From mitotic prophase to metaphase, localizes at the inner centromere between a pair of sister kinetochores. Decreased expression at the onset of anaphase. .		
Tissue specificity	Widely expressed with the highest expression in heart and skeletal muscle.		
Function	Function:The B regulatory subunit might modulate substrate selectivity and catalytic activity, and also might direct the localization of the catalytic enzyme to a particular subcellular compartment.,PTM:Phosphorylated on serine residues.,similarity:Belongs to the phosphatase 2A regulatory subunit B56 family.,subcellular location:From mitotic prophase to metaphase, localizes at the inner centromere between a pair of sister kinetochores. Decreased expression at the onset of anaphase.,subunit:PP2A consists of a common heterodimeric core enzyme, composed of a 36 kDa catalytic subunit (subunit C) and a 65 kDa constant regulatory subunit (PR65 or subunit A), that associates with a variety of regulatory subunits. Proteins that associate with the core dimer include three families of regulatory subunits B (the R2/B/PR55/B55, R3/B"/PR72/PR130/PR59 and R5/B'/B56 families), the 48 kDa variable regulatory subunit, viral proteins, and cell signaling molecules. Interacts with SGOL1.,tissue specificity:Widely expressed with the highest expression in heart and skeletal muscle.,		

| Validation Data



Western blot analysis of the lysates from HeLa cells using PPP2R5A antibody.



Immunohistochemical analysis of paraffin-embedded human oophoroma. 1, Antibody was diluted at 1:200(4° overnight). 2, Tris-EDTA,pH9.0 was used for antigen retrieval. 3,Secondary antibody was diluted at 1:200(room temperature, 45min).

| Contact information

Orders: order.cn@immunoway.com
Support: support.cn@immunoway.com
Telephone: 400-8787-807(China)
Website: <http://www.immunoway.com.cn>
Address: 2200 Ringwood Ave San Jose, CA 95131 USA



Please scan the QR code
to access additional
product information:
**PP2A-B56- α Rabbit
pAb**

For Research Use Only. Not for Use in Diagnostic Procedures.

[Antibody](#) | [ELISA Kits](#) | [Protein](#) | [Reagents](#)