

## POTE-14/22 Rabbit pAb

CatalogNo: YT3822

### Key Features

#### Host Species

- Rabbit

#### Reactivity

- Human

#### Applications

- WB,IHC,IF,ELISA

#### MW

- 61kD (Observed)

#### Isotype

- IgG

### Storage

**Storage\*** -15°C to -25°C/1 year(Do not lower than -25°C)

**Formulation** Liquid in PBS containing 50% glycerol, 0.5% BSA and 0.02% sodium azide.

### Recommended Dilution Ratios

**WB 1:500-1:2000**

**IHC 1:100-1:300**

**ELISA 1:40000**

**IF 1:50-200**

### Basic Information

**Clonality** Polyclonal

### Immunogen Information

**Immunogen** The antiserum was produced against synthesized peptide derived from human A26C2/3. AA range:178-227

**Specificity** POTE-14/22 Polyclonal Antibody detects endogenous levels of POTE-14/22 protein.

### Target Information

**Gene name** POTEG/POTEH

**Protein Name** POTE ankyrin domain family member G/H

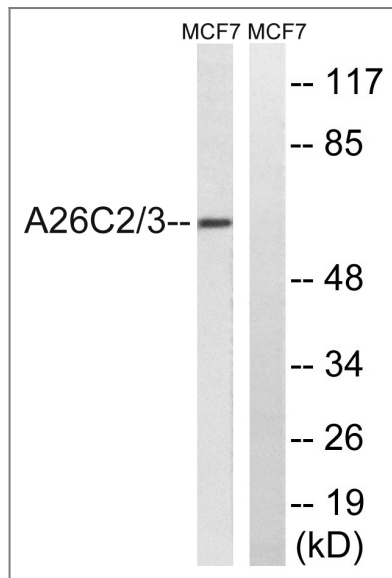
Organism	Gene ID	UniProt ID
Human	<a href="#">23784</a> ; <a href="#">404785</a> ;	<a href="#">Q6S545</a> ; <a href="#">Q6S5H5</a> ;

**Cellular Localization** integral component of membrane,

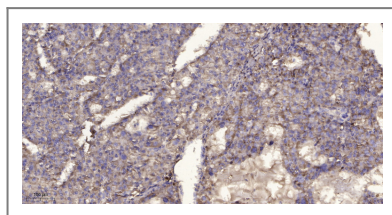
**Tissue specificity** Prostate,

**Function** similarity:Belongs to the POTE family.,similarity:Contains 7 ANK repeats.,

## Validation Data



Western blot analysis of lysates from MCF-7 cells, using A26C2/3 Antibody. The lane on the right is blocked with the synthesized peptide.



Immunohistochemical analysis of paraffin-embedded human liver cancer. 1, Antibody was diluted at 1:200(4° overnight). 2, Tris-EDTA,pH9.0 was used for antigen retrieval. 3,Secondary antibody was diluted at 1:200(room temperature, 45min).

## Contact information

Orders: [order.cn@immunoway.com](mailto:order.cn@immunoway.com)  
Support: [support.cn@immunoway.com](mailto:support.cn@immunoway.com)  
Telephone: 400-8787-807(China)  
Website: <http://www.immunoway.com.cn>  
Address: 2200 Ringwood Ave San Jose, CA 95131 USA



Please scan the QR code to access additional product information:  
**POTE-14/22 Rabbit pAb**

