

POTE14/22 Rabbit pAb

CatalogNo: YT3821

Key Features

Host Species

- Rabbit

Reactivity

- Human

Applications

- WB,IHC,IF,ELISA

MW

- 67kD (Observed)

Isotype

- IgG

Recommended Dilution Ratios

WB 1:500-1:2000

IHC 1:100-1:300

ELISA 1:40000

IF 1:50-200

Storage

Storage* -15°C to -25°C/1 year(Do not lower than -25°C)

Formulation Liquid in PBS containing 50% glycerol, 0.5% BSA and 0.02% sodium azide.

Basic Information

Clonality Polyclonal

Immunogen Information

Immunogen The antiserum was produced against synthesized peptide derived from human POTE14/22 protein. AA range:401-450

Specificity POTE14/22 Polyclonal Antibody detects endogenous levels of POTE14/22 protein.

Target Information

Gene name POTE^G

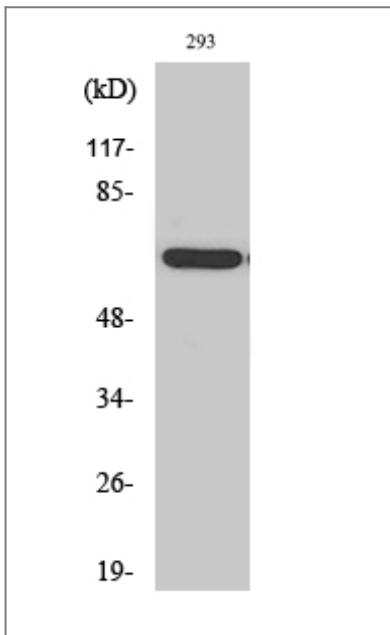
Protein Name POTE ankyrin domain family member G

| Organism | Gene ID | UniProt ID |
|----------|--|--|
| Human | 404785 ; 23784 ; | Q6S5H5 ; Q6S545 ; A6NI47 ; |

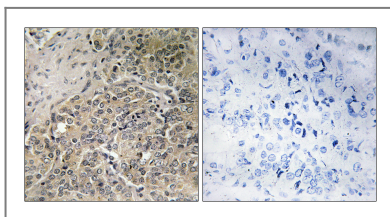
Tissue specificity Prostate,

Function similarity:Belongs to the POTE family.,similarity:Contains 5 ANK repeats.,

Validation Data



Western Blot analysis of various cells using POTE14/22 Polyclonal Antibody



Immunohistochemistry analysis of paraffin-embedded human prostate carcinoma, using A26C2/3 Antibody. The picture on the right is blocked with the synthesized peptide.

Contact information

Orders: order.cn@immunoway.com
Support: support.cn@immunoway.com
Telephone: 400-8787-807(China)
Website: <http://www.immunoway.com.cn>
Address: 2200 Ringwood Ave San Jose, CA 95131 USA



Please scan the QR code to access additional product information:
POTE14/22 Rabbit pAb

