

Pmp24 Rabbit pAb

CatalogNo: YT3802

Key Features

Host Species

- Rabbit

Reactivity

- Human, Monkey

Applications

- WB, IHC, IF, ELISA

MW

- 24kD (Observed)

Isotype

- IgG

Recommended Dilution Ratios

WB 1:500-1:2000**IHC 1:100-1:300****ELISA 1:20000****IF 1:50-200**

Storage

Storage*

-15°C to -25°C/1 year(Do not lower than -25°C)

Formulation

Liquid in PBS containing 50% glycerol, 0.5% BSA and 0.02% sodium azide.

Basic Information

Clonality

Polyclonal

Immunogen Information

Immunogen

The antiserum was produced against synthesized peptide derived from human PXMP4. AA range:15-64

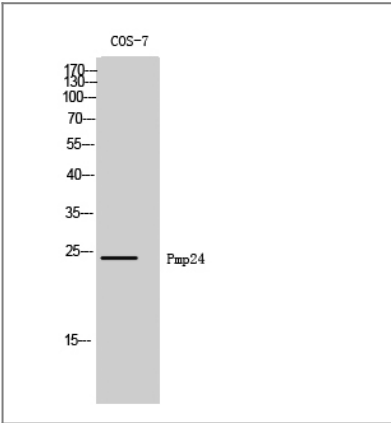
Specificity

Pmp24 Polyclonal Antibody detects endogenous levels of Pmp24 protein.

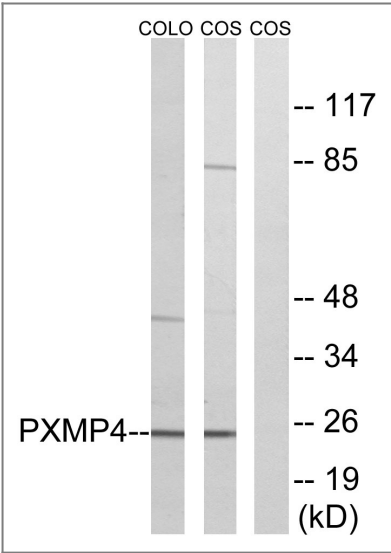
Target Information

Gene name	PXMP4		
Protein Name	Peroxisomal membrane protein 4		
	Organism	Gene ID	UniProt ID
	Human	11264 ;	Q9Y6I8 ;
	Mouse		Q9JJW0 ;
Cellular Localization	Peroxisome membrane ; Multi-pass membrane protein .		
Tissue specificity	Expressed in normal prostate epithelial cells, and androgen-sensitive prostate adenocarcinoma cells. Not expressed in androgen-insensitive prostate adenocarcinoma cells.		
Function	similarity:Belongs to the peroxisomal membrane protein PXMP2/4 family.,subunit:Interacts with PEX19.,		

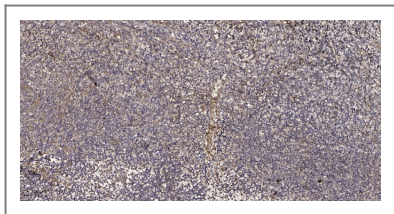
| Validation Data



Western Blot analysis of COS-7 cells using Pmp24 Polyclonal Antibody



Western blot analysis of lysates from COS7 and COLO cells, using PXMP4 Antibody. The lane on the right is blocked with the synthesized peptide.



Immunohistochemical analysis of paraffin-embedded human tonsil. 1, Antibody was diluted at 1:200(4° overnight). 2, Tris-EDTA,pH9.0 was used for antigen retrieval. 3,Secondary antibody was diluted at 1:200(room temperature, 30min).

| Contact information

Orders: order.cn@immunoway.com
Support: support.cn@immunoway.com
Telephone: 400-8787-807(China)
Website: <http://www.immunoway.com.cn>
Address: 2200 Ringwood Ave San Jose, CA 95131 USA



Please scan the QR code
to access additional
product information:
Pmp24 Rabbit pAb

For Research Use Only. Not for Use in Diagnostic Procedures.

[Antibody](#) | [ELISA Kits](#) | [Protein](#) | [Reagents](#)