

PLK-5 Rabbit pAb

CatalogNo: YT3798

Key Features

Host Species

- Rabbit

Reactivity

- Human, Mouse

Applications

- WB, IHC

MW

- 55kD (Observed)

Isotype

- IgG

Recommended Dilution Ratios

WB 1:500-2000

IHC 1:50-300

Storage

Storage*

-15°C to -25°C/1 year (Do not lower than -25°C)

Formulation

Liquid in PBS containing 50% glycerol, 0.5% BSA and 0.02% sodium azide.

Basic Information

Clonality

Polyclonal

Immunogen Information

Immunogen

The antiserum was produced against synthesized peptide derived from human PLK5. AA range: 131-180

Specificity

PLK-5 Polyclonal Antibody detects endogenous levels of PLK-5 protein.

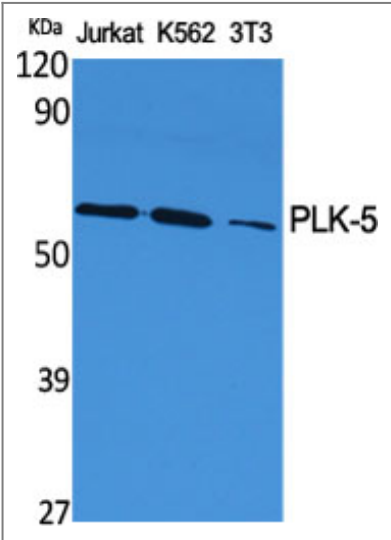
Target Information

Gene name

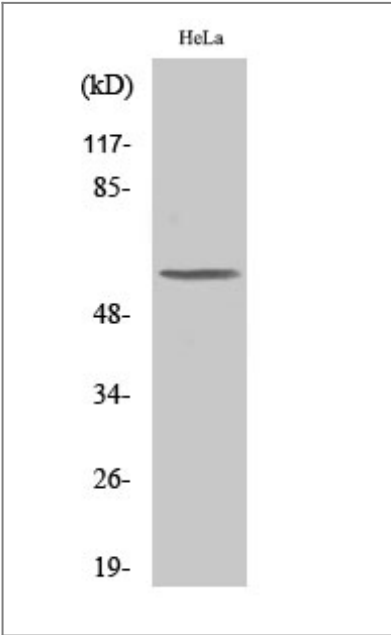
PLK5

Protein Name	Inactive serine/threonine-protein kinase PLK5		
	Organism	Gene ID	UniProt ID
	Human	126520 ;	Q496M5 ;
	Mouse		Q4FZD7 ;
Cellular Localization	Nucleus, nucleolus . Cytoplasm .		
Tissue specificity	Expressed in the brain, neurons and glial cells. Also expressed in highly differentiated cells, such as the serous acini in the parotid gland, distal and proximal tubules of the kidney, tubules of the seminal gland, Kupffer cells and some hepatocytes in the liver, and some cells in the germinal center of lymph nodes (at protein level).		

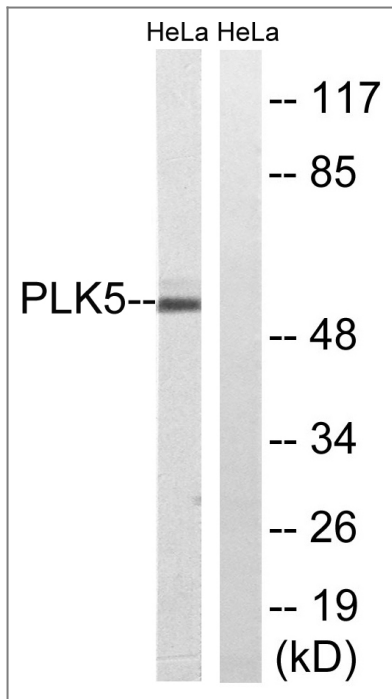
| Validation Data



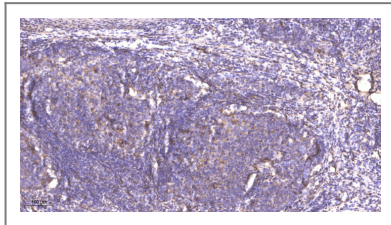
Western Blot analysis of various cells using PLK-5 Polyclonal Antibody



Western Blot analysis of COLO205 cells using PLK-5 Polyclonal Antibody



Western blot analysis of lysates from HeLa cells, using PLK5 Antibody. The lane on the right is blocked with the synthesized peptide.



Immunohistochemical analysis of paraffin-embedded human cervical carcinoma. 1, Antibody was diluted at 1:200(4° overnight). 2, Tris-EDTA, pH9.0 was used for antigen retrieval. 3, Secondary antibody was diluted at 1:200(room temperature, 45min).

Contact information

Orders: order.cn@immunoway.com
 Support: support.cn@immunoway.com
 Telephone: 400-8787-807(China)
 Website: <http://www.immunoway.com.cn>
 Address: 2200 Ringwood Ave San Jose, CA 95131 USA



Please scan the QR code to access additional product information:
PLK-5 Rabbit pAb

For Research Use Only. Not for Use in Diagnostic Procedures.

[Antibody](#) | [ELISA Kits](#) | [Protein](#) | [Reagents](#)