

## PLB Rabbit pAb

CatalogNo: YT3787

### Key Features

#### Host Species

- Rabbit

#### Reactivity

- Human, Mouse, Rat

#### Applications

- WB, IHC, IF

#### MW

- 6kD (Calculated)

#### Isotype

- IgG

### Recommended Dilution Ratios

WB 1:500-2000

IHC 1:50-300

IF 1:200-1:1000

### Storage

**Storage\*** -15°C to -25°C/1 year (Do not lower than -25°C)

**Formulation** Liquid in PBS containing 50% glycerol, 0.5% BSA and 0.02% sodium azide.

### Basic Information

**Clonality** Polyclonal

### Immunogen Information

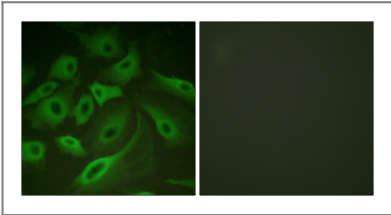
**Immunogen** The antiserum was produced against synthesized peptide derived from human PLB. AA range: 1-50

**Specificity** PLB Polyclonal Antibody detects endogenous levels of PLB protein.

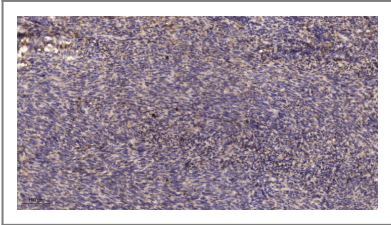
### Target Information

Gene name	PLN		
Protein Name	Cardiac phospholamban		
	Organism	Gene ID	UniProt ID
	Human	<a href="#">5350</a> ;	<a href="#">P26678</a> ;
	Mouse	<a href="#">18821</a> ;	<a href="#">P61014</a> ;
	Rat	<a href="#">64672</a> ;	<a href="#">P61016</a> ;
Cellular Localization	Endoplasmic reticulum membrane ; Single-pass membrane protein . Sarcoplasmic reticulum membrane ; Single-pass membrane protein . Mitochondrion membrane ; Single-pass membrane protein . Membrane ; Single-pass membrane protein . Colocalizes with HAX1 at the endoplasmic reticulum (PubMed:17241641). Colocalizes with DMPK a the sarcoplasmic reticulum (PubMed:15598648) .		
Tissue specificity	Heart muscle (at protein level).		
Function	Disease:Defects in PLN are the cause of cardiomyopathy dilated type 1P (CMD1P) [MIM:609909]. Dilated cardiomyopathy is a disorder characterized by ventricular dilation and impaired systolic function, resulting in congestive heart failure and arrhythmia. Patients are at risk of premature death.,Function:Phospholamban has been postulated to regulate the activity of the calcium pump of cardiac sarcoplasmic reticulum.,PTM:Phosphorylated in response to beta-adrenergic stimulation.,similarity:Belongs to the phospholamban family.,subunit:Homopentamer.,tissue specificity:Heart.,		

| Validation Data



Immunofluorescence analysis of HeLa cells, using PLB Antibody. The picture on the right is blocked with the synthesized peptide.



Immunohistochemical analysis of paraffin-embedded human uterus. 1, Antibody was diluted at 1:200(4° overnight). 2, Tris-EDTA,pH9.0 was used for antigen retrieval. 3,Secondary antibody was diluted at 1:200(room temperature, 45min).

| Contact information

Orders: order.cn@immunoway.com  
Support: support.cn@immunoway.com  
Telephone: 400-8787-807(China)  
Website: <http://www.immunoway.com.cn>  
Address: 2200 Ringwood Ave San Jose, CA 95131 USA



Please scan the QR code  
to access additional  
product information:  
**PLB Rabbit pAb**

---

For Research Use Only. Not for Use in Diagnostic Procedures.

[Antibody](#) | [ELISA Kits](#) | [Protein](#) | [Reagents](#)