

PKN Rabbit pAb

CatalogNo: YT3778

Key Features

Host Species

- Rabbit

Reactivity

- Human, Mouse, Rat

Applications

- WB, IHC

MW

- 105kD (Observed)

Isotype

- IgG

Recommended Dilution Ratios

WB 1:500-2000

IHC 1:50-300

Storage

Storage*

-15°C to -25°C/1 year (Do not lower than -25°C)

Formulation

Liquid in PBS containing 50% glycerol, 0.5% BSA and 0.02% sodium azide.

Basic Information

Clonality

Polyclonal

Immunogen Information

Immunogen

Synthesized peptide derived from the Internal region of human PKN.

Specificity

PKN Polyclonal Antibody detects endogenous levels of PKN protein.

Target Information

Gene name

PKN1

Protein Name

Serine/threonine-protein kinase N1

Organism	Gene ID	UniProt ID
Human	5585;	Q16512;
Mouse	320795;	P70268;
Rat	29355;	Q63433;

Cellular Localization

Cytoplasm . Nucleus . Endosome . Cell membrane ; Peripheral membrane protein . Cleavage furrow . Midbody . Associates with chromatin in a ligand-dependent manner. Localization to endosomes is mediated via its interaction with RHOB. Association to the cell membrane is dependent on Ser-377 phosphorylation. Accumulates during telophase at the cleavage furrow and finally concentrates around the midbody in cytokinesis. .

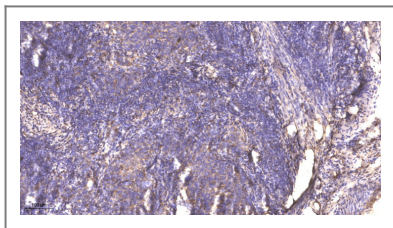
Tissue specificity

Found ubiquitously. Expressed in heart, brain, placenta, lung, skeletal muscle, kidney and pancreas. Expressed in numerous tumor cell lines, especially in breast tumor cells.

Function

Catalytic activity:ATP + a protein = ADP + a phosphoprotein.,Domain:The C1 domain does not bind the diacylglycerol (DAG).,enzyme regulation:Activated by lipids, particularly cardiolipin and to a lesser extent by other acidic phospholipids. Two specific sites, Thr-774 (activation loop of the kinase domain) and Ser-916 (turn motif), need to be phosphorylated for its full activation.,Function:Can phosphorylate ribosomal protein S6. Mediates GTPase Rho dependent intracellular signaling.,PTM:Activated by limited proteolysis with trypsin.,PTM:Autophosphorylated; preferably on serine.,similarity:Belongs to the protein kinase superfamily.,similarity:Belongs to the protein kinase superfamily. AGC Ser/Thr protein kinase family. PKC subfamily.,similarity:Contains 1 AGC-kinase C-terminal domain.,similarity:Contains 1 C2 domain.,similarity:Contains 1 protein kinase domain.,similarity:Contains 3 REM (Hr1) repeats.,subunit:Interacts with ZA20D3 (By similarity). Interacts with RhoA and Rac1.,tissue specificity:Found ubiquitously. Expressed in heart, brain, placenta, lung, skeletal muscle, kidney and pancreas.,

| Validation Data



Immunohistochemical analysis of paraffin-embedded human cervical carcinoma. 1, Antibody was diluted at 1:200(4° overnight). 2, Tris-EDTA,pH9.0 was used for antigen retrieval. 3,Secondary antibody was diluted at 1:200(room temperature, 45min).

| Contact information

Orders: order.cn@immunoway.com
Support: support.cn@immunoway.com
Telephone: 400-8787-807(China)
Website: <http://www.immunoway.com.cn>
Address: 2200 Ringwood Ave San Jose, CA 95131 USA



Please scan the QR code to access additional product information:
PKN Rabbit pAb

