

Pki α Rabbit pAb

CatalogNo: YT3775

Key Features

Host Species

- Rabbit

Reactivity

- Human, Mouse, Rat

Applications

- IHC, IF, ELISA

MW

- 8kD (Calculated)

Isotype

- IgG

Recommended Dilution Ratios

IHC 1:100-1:300**IF 1:200-1:1000****ELISA 1:20000****Not yet tested in other applications.**

Storage

Storage*

-15°C to -25°C/1 year (Do not lower than -25°C)

Formulation

Liquid in PBS containing 50% glycerol, 0.5% BSA and 0.02% sodium azide.

Basic Information

Clonality

Polyclonal

Immunogen Information

Immunogen

The antiserum was produced against synthesized peptide derived from human IPKA. AA range: 10-59

SpecificityPki α Polyclonal Antibody detects endogenous levels of Pki α protein.

Target Information

Gene name PKIA

Protein Name cAMP-dependent protein kinase inhibitor alpha

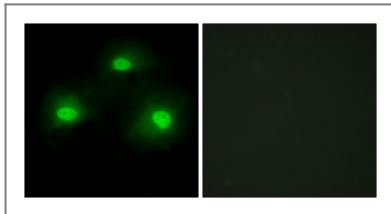
| Organism | Gene ID | UniProt ID |
|----------|--------------------------|--------------------------|
| Human | 5569 ; | P61925 ; |
| Mouse | 18767 ; | P63248 ; |
| Rat | 114906 ; | P63249 ; |

Cellular Localization nucleus,cytoplasm,

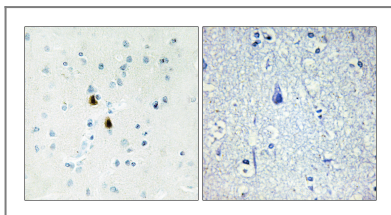
Tissue specificity Skeletal muscle,

Function Function:Extremely potent competitive inhibitor of cAMP-dependent protein kinase activity, this protein interacts with the catalytic subunit of the enzyme after the cAMP-induced dissociation of its regulatory chains.,miscellaneous:The inhibitory site contains regions very similar to the hinge regions (sites that directly interact with the enzyme active site) and "pseudosubstrate site" of the regulatory chains; but, unlike these chains, PKI does not contain cAMP-binding sites. The arginine residues within the inhibitory site are essential for inhibition and recognition of the enzyme active site.,similarity:Belongs to the PKI family.,

Validation Data



Immunofluorescence analysis of HeLa cells, using IPKA Antibody. The picture on the right is blocked with the synthesized peptide.



Immunohistochemistry analysis of paraffin-embedded human brain tissue, using IPKA Antibody. The picture on the right is blocked with the synthesized peptide.

Contact information

Orders: order.cn@immunoway.com
Support: support.cn@immunoway.com
Telephone: 400-8787-807(China)
Website: <http://www.immunoway.com.cn>
Address: 2200 Ringwood Ave San Jose, CA 95131 USA



Please scan the QR code to access additional product information:
Pki α Rabbit pAb

