

## PIPOX Rabbit pAb

CatalogNo: YT3736

### | Key Features

#### Host Species

- Rabbit

#### Reactivity

- Human, Mouse

#### Applications

- WB, ELISA, IHC

#### MW

- 44kD (Observed)

#### Isotype

- IgG

### | Recommended Dilution Ratios

**WB 1:500-2000**

**IHC 1:50-300**

**ELISA 1:2000-20000**

### | Storage

**Storage\*** -15°C to -25°C/1 year (Do not lower than -25°C)

**Formulation** Liquid in PBS containing 50% glycerol, 0.5% BSA and 0.02% sodium azide.

### | Basic Information

**Clonality** Polyclonal

### | Immunogen Information

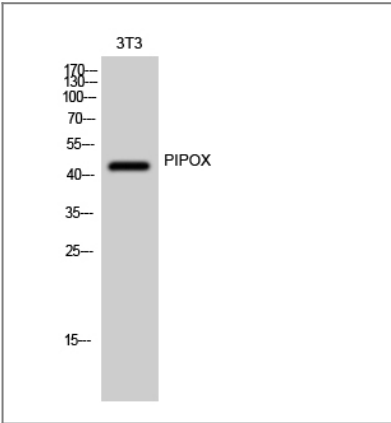
**Immunogen** The antiserum was produced against synthesized peptide derived from human PIPOX. AA range: 257-306

**Specificity** PIPOX Polyclonal Antibody detects endogenous levels of PIPOX protein.

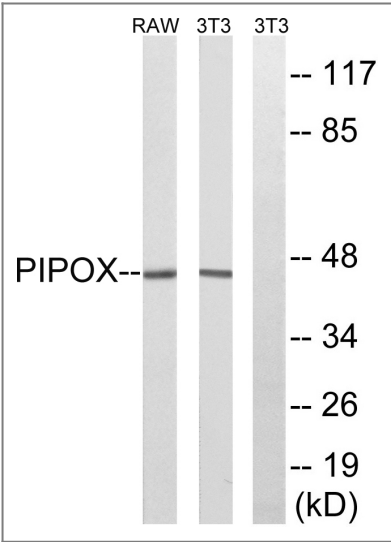
### | Target Information

Gene name	PIPOX		
Protein Name	Peroxisomal sarcosine oxidase		
	Organism	Gene ID	UniProt ID
	Human	<a href="#">51268</a> ;	<a href="#">Q9P0Z9</a> ;
	Mouse		<a href="#">Q9D826</a> ;
Cellular Localization	Peroxisome .		
Tissue specificity	Expressed in the liver and kidney.		
Function	Catalytic activity:L-pipecolate + O(2) = 2,3,4,5-tetrahydropyridine-2-carboxylate + H(2)O(2).,Catalytic activity:Sarcosine + H(2)O + O(2) = glycine + formaldehyde + H(2)O(2).,cofactor:Binds 1 FAD per subunit.,Function:Metabolizes sarcosine, L-pipecolic acid and L-proline.,similarity:Belongs to the MSOX/MTOX family.,subunit:Monomer.,		

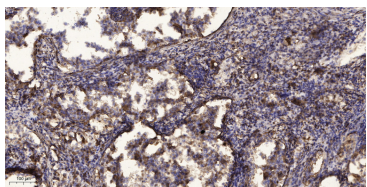
Validation Data



Western Blot analysis of 3T3 cells using PIPOX Polyclonal Antibody



Western blot analysis of lysates from NIH/3T3 and RAW264.7 cells, using PIPOX Antibody. The lane on the right is blocked with the synthesized peptide.



Immunohistochemical analysis of paraffin-embedded human Squamous cell carcinoma of lung. 1, Antibody was diluted at 1:200(4° overnight). 2, Tris-EDTA,pH9.0 was used for antigen retrieval. 3,Secondary antibody was diluted at 1:200(room temperature, 45min).

## | Contact information

Orders: [order.cn@immunoway.com](mailto:order.cn@immunoway.com)  
Support: [support.cn@immunoway.com](mailto:support.cn@immunoway.com)  
Telephone: 400-8787-807(China)  
Website: <http://www.immunoway.com.cn>  
Address: 2200 Ringwood Ave San Jose, CA 95131 USA



Please scan the QR code  
to access additional  
product information:  
**PIPOX Rabbit pAb**

---

For Research Use Only. Not for Use in Diagnostic Procedures.

[Antibody](#) | [ELISA Kits](#) | [Protein](#) | [Reagents](#)