

## PI 3-kinase p101 Rabbit pAb

CatalogNo: YT3708

### Key Features

#### Host Species

- Rabbit

#### Reactivity

- Human, Mouse

#### Applications

- WB, IHC, IF, ELISA

#### MW

- 100kD (Observed)

#### Isotype

- IgG

### Storage

**Storage\*** -15°C to -25°C/1 year (Do not lower than -25°C)

**Formulation** Liquid in PBS containing 50% glycerol, 0.5% BSA and 0.02% sodium azide.

### Recommended Dilution Ratios

**WB 1:500-1:2000**

**IHC 1:100-1:300**

**ELISA 1:20000**

**IF 1:50-200**

### Basic Information

**Clonality** Polyclonal

### Immunogen Information

**Immunogen** The antiserum was produced against synthesized peptide derived from human PIK3R5. AA range:695-744

**Specificity** PI 3-kinase p101 Polyclonal Antibody detects endogenous levels of PI 3-kinase p101 protein.

## Target Information

**Gene name** PIK3R5

**Protein Name** Phosphoinositide 3-kinase regulatory subunit 5

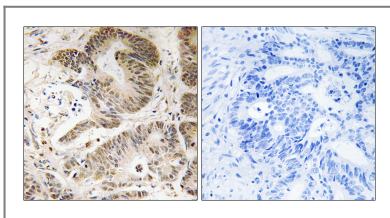
| Organism | Gene ID                  | UniProt ID               |
|----------|--------------------------|--------------------------|
| Human    | <a href="#">23533</a> ;  | <a href="#">Q8WYR1</a> ; |
| Mouse    | <a href="#">320207</a> ; | <a href="#">Q5SW28</a> ; |

**Cellular Localization** Nucleus . Cytoplasm . Cell membrane ; Peripheral membrane protein . Predominantly localized in the nucleus in absence of PIK3CG/p120. Colocalizes with PIK3CG/p120 in the cytoplasm. Translocated to the plasma membrane in a beta-gamma G protein-dependent manner. .

**Tissue specificity** Ubiquitously expressed with high expression in fetal brain compared to adult brain. Abundant expression is observed in cerebellum, cerebral cortex, cerebral meninges, and vermis cerebelli.

**Function** Domain:The heterodimerization region allows the binding to the catalytic subunit.,enzyme regulation:Greatly activated by G gamma proteins.,Function:Regulatory subunit of the PI3K gamma complex.,subunit:Heterodimer of a catalytic subunit (PIK3CG/p120) and a regulatory (PIK3R5a/p101) subunit. Interacts with G beta gamma proteins.,tissue specificity:Highly expressed in leukocytes, followed by spleen, lymph node, thymus and bone marrow.,

## Validation Data



Immunohistochemistry analysis of paraffin-embedded human colon carcinoma tissue, using PIK3R5 Antibody. The picture on the right is blocked with the synthesized peptide.

## Contact information

Orders: [order.cn@immunoway.com](mailto:order.cn@immunoway.com)  
Support: [support.cn@immunoway.com](mailto:support.cn@immunoway.com)  
Telephone: 400-8787-807(China)  
Website: <http://www.immunoway.com.cn>  
Address: 2200 Ringwood Ave San Jose, CA 95131 USA



Please scan the QR code to access additional product information:  
**PI 3-kinase p101 Rabbit pAb**

