

## Photomedin-1 Rabbit pAb

CatalogNo: YT3705

### Key Features

#### Host Species

- Rabbit

#### Reactivity

- Human, Mouse

#### Applications

- WB, IHC, IF

#### MW

- 73kD (Observed)

#### Isotype

- IgG

### Recommended Dilution Ratios

**WB 1:500-2000**

**IHC 1:50-300**

**IF 1:200-1:1000**

### Storage

**Storage\*** -15°C to -25°C/1 year (Do not lower than -25°C)

**Formulation** Liquid in PBS containing 50% glycerol, 0.5% BSA and 0.02% sodium azide.

### Basic Information

**Clonality** Polyclonal

### Immunogen Information

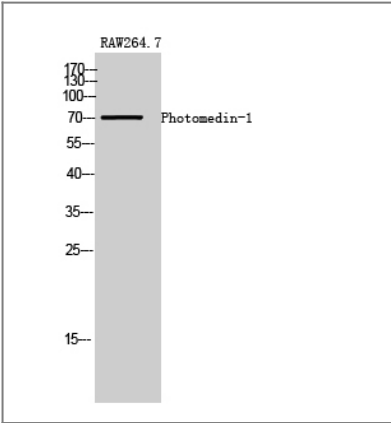
**Immunogen** The antiserum was produced against synthesized peptide derived from human OLFML2A. AA range: 311-360

**Specificity** Photomedin-1 Polyclonal Antibody detects endogenous levels of Photomedin-1 protein.

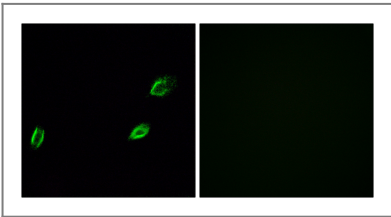
### Target Information

Gene name	OLFML2A		
Protein Name	Olfactomedin-like protein 2A		
	Organism	Gene ID	UniProt ID
	Human	<a href="#">169611</a> ;	<a href="#">Q68BL7</a> ;
	Mouse		<a href="#">Q8BHP7</a> ;
Cellular Localization	Secreted . Localizes to the podocyte major processes. Colocalized with the major process protein VIM throughout podocyte development. .		
Tissue specificity	In the kidney expressed only by podocytes, wherein they localize to major processes.		
Function	PTM:May be cleaved at Lys-295 after secretion.,PTM:O-glycosylated but not N-glycosylated.,similarity:Contains 1 olfactomedin-like domain.,subunit:Homodimer. Binds to heparin and chondroitin sulfate E.,		

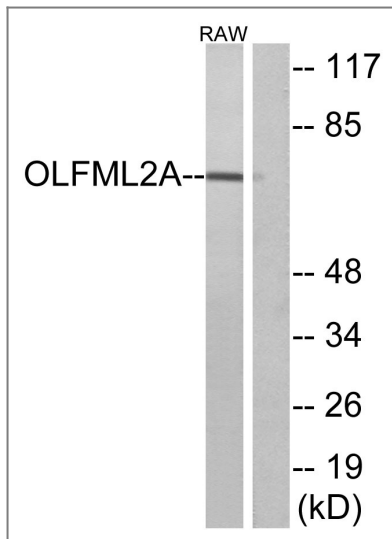
Validation Data



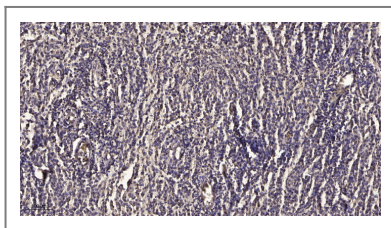
Western Blot analysis of RAW264.7 cells using Photomedin-1 Polyclonal Antibody



Immunofluorescence analysis of A549 cells, using OLFML2A Antibody. The picture on the right is blocked with the synthesized peptide.



Western blot analysis of lysates from RAW264.7 cells, using OLFML2A Antibody. The lane on the right is blocked with the synthesized peptide.



Immunohistochemical analysis of paraffin-embedded human meningioma. 1, Antibody was diluted at 1:200(4° overnight). 2, Tris-EDTA,pH9.0 was used for antigen retrieval. 3,Secondary antibody was diluted at 1:200(room temperature, 45min).

## Contact information

Orders: order.cn@immunoway.com  
 Support: support.cn@immunoway.com  
 Telephone: 400-8787-807(China)  
 Website: <http://www.immunoway.com.cn>  
 Address: 2200 Ringwood Ave San Jose, CA 95131 USA



Please scan the QR code to access additional product information:

**Photomedin-1**  
**Rabbit pAb**

For Research Use Only. Not for Use in Diagnostic Procedures.

[Antibody](#) | [ELISA Kits](#) | [Protein](#) | [Reagents](#)