

Phocein Rabbit pAb

CatalogNo: YT3704

| Key Features

Host Species

- Rabbit

Reactivity

- Human, Mouse, Rat

Applications

- WB, IHC, IF, ELISA

MW

- 26kD (Observed)

Isotype

- IgG

| Recommended Dilution Ratios

WB 1:500-1:2000

IHC 1:100-1:300

IF 1:200-1:1000

ELISA 1:20000

Not yet tested in other applications.

| Storage

Storage* -15°C to -25°C/1 year (Do not lower than -25°C)

Formulation Liquid in PBS containing 50% glycerol, 0.5% BSA and 0.02% sodium azide.

| Basic Information

Clonality Polyclonal

| Immunogen Information

Immunogen The antiserum was produced against synthesized peptide derived from human MOBL3. AA range: 1-50

Specificity Phocein Polyclonal Antibody detects endogenous levels of Phocein protein.

Target Information

Gene name MOB4

Protein Name MOB-like protein phocein

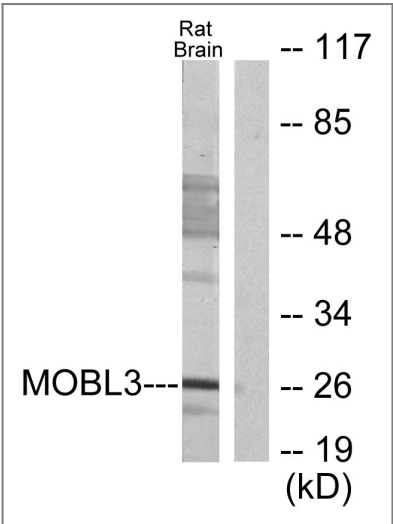
Organism	Gene ID	UniProt ID
Human	25843 ;	Q9Y3A3 ;
Mouse	19070 ;	Q6PEB6 ;
Rat	171050 ;	Q9QYW3 ;

Cellular Localization Cytoplasm, perinuclear region . Membrane ; Peripheral membrane protein . Golgi apparatus, Golgi stack membrane ; Peripheral membrane protein . In a perinuclear punctate pattern. Associated with membranes and the Golgi stacks.

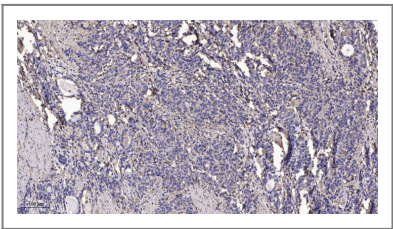
Tissue specificity Adrenal gland,Brain,Trachea,Urinary bladder,

Function PTM:Phosphorylated on serine residues.,similarity:Belongs to the MOB1/phocein family.,subcellular location:In a perinuclear punctate pattern. Associated with membranes and the Golgi stacks.,subunit:Binds STRN4 (By similarity). Binds STRN and STRN3. Part of a ternary complex containing MOBKL3, STRN and/or STRN3 and PPA2.,

Validation Data



Western blot analysis of lysates from rat brain cells, using MOBKL3 Antibody. The lane on the right is blocked with the synthesized peptide.



Immunohistochemical analysis of paraffin-embedded human Gastric adenocarcinoma. 1, Antibody was diluted at 1:200(4° overnight). 2, Tris-EDTA,pH9.0 was used for antigen retrieval. 3,Secondary antibody was diluted at 1:200(room temperature, 45min).

| Contact information

Orders: order.cn@immunoway.com
Support: support.cn@immunoway.com
Telephone: 400-8787-807(China)
Website: <http://www.immunoway.com.cn>
Address: 2200 Ringwood Ave San Jose, CA 95131 USA



Please scan the QR code
to access additional
product information:
Phocein Rabbit pAb

For Research Use Only. Not for Use in Diagnostic Procedures.

[Antibody](#) | [ELISA Kits](#) | [Protein](#) | [Reagents](#)