

# Peroxin 11γ Rabbit pAb

CatalogNo: YT3672

## Key Features

### Host Species

- Rabbit

### Reactivity

- Human, Mouse

### Applications

- IHC, IF, ELISA

### MW

- 27kD (Calculated)

### Isotype

- IgG

## Storage

**Storage\*** -15°C to -25°C/1 year (Do not lower than -25°C)

**Formulation** Liquid in PBS containing 50% glycerol, 0.5% BSA and 0.02% sodium azide.

## Recommended Dilution Ratios

**IHC 1:100-1:300**

**ELISA 1:20000**

**IF 1:50-200**

## Basic Information

**Clonality** Polyclonal

## Immunogen Information

**Immunogen** The antiserum was produced against synthesized peptide derived from human PEX11G. AA range:11-60

**Specificity** Peroxin 11γ Polyclonal Antibody detects endogenous levels of Peroxin 11γ protein.

## Target Information

**Gene name** PEX11G

**Protein Name** Peroxisomal membrane protein 11C

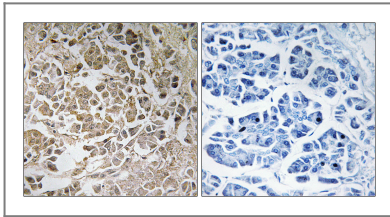
Organism	Gene ID	UniProt ID
Human	<a href="#">92960;</a>	<a href="#">Q96HA9;</a>
Mouse		<a href="#">Q6P6M5;</a>

**Cellular Localization** Peroxisome membrane ; Multi-pass membrane protein .

**Tissue specificity** Pancreas,Testis,

**Function** similarity:Belongs to the peroxin-11 family.,

## Validation Data



Immunohistochemistry analysis of paraffin-embedded human pancreas, using PEX11C Antibody. The picture on the right is blocked with the synthesized peptide.

## Contact information

Orders: [order.cn@immunoway.com](mailto:order.cn@immunoway.com)  
Support: [support.cn@immunoway.com](mailto:support.cn@immunoway.com)  
Telephone: 400-8787-807(China)  
Website: <http://www.immunoway.com.cn>  
Address: 2200 Ringwood Ave San Jose, CA 95131 USA



Please scan the QR code to access additional product information:  
**Peroxin 11y Rabbit pAb**

For Research Use Only. Not for Use in Diagnostic Procedures.

[Antibody](#) | [ELISA Kits](#) | [Protein](#) | [Reagents](#)