

Pepsin C Rabbit pAb

CatalogNo: YT3661

Key Features

Host Species

- Rabbit

Reactivity

- Human,Rat,Mouse,

Applications

- WB,IHC,IF,ELISA

MW

- 42kD (Observed)

Isotype

- IgG

Recommended Dilution Ratios

WB 1:500-1:2000

IHC 1:100-1:300

ELISA 1:40000

IF 1:50-200

Storage

Storage*

-15°C to -25°C/1 year(Do not lower than -25°C)

Formulation

Liquid in PBS containing 50% glycerol, 0.5% BSA and 0.02% sodium azide.

Basic Information

Clonality

Polyclonal

Immunogen Information

Immunogen

The antiserum was produced against synthesized peptide derived from human Pepsin C. AA range:257-306

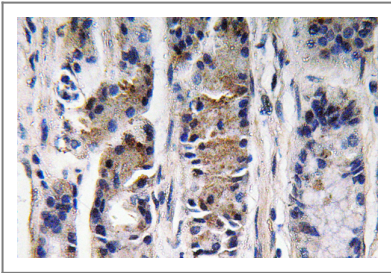
Specificity

Pepsin C Polyclonal Antibody detects endogenous levels of Pepsin C protein.

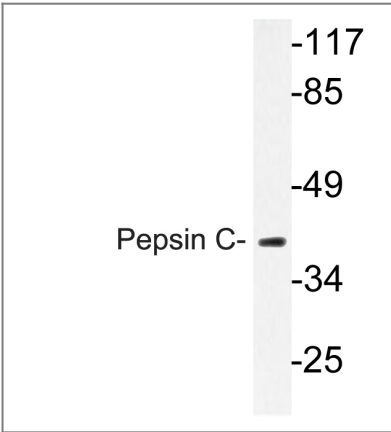
Target Information

Gene name	PGC		
Protein Name	Gastricsin		
	Organism	Gene ID	UniProt ID
	Human	5225;	P20142;
	Mouse		Q9D7R7;
Cellular Localization	Secreted.		
Tissue specificity	Brain,Liver,Placenta,Stomach,		
Function	Catalytic activity:More restricted specificity than pepsin A, but shows preferential cleavage at Tyr-[Xaa bonds. High activity on hemoglobin.,Function:Hydrolyzes a variety of proteins.,similarity:Belongs to the peptidase A1 family.,		

| Validation Data



Immunohistochemistry analysis of Pepsin C antibody in paraffin-embedded human lung carcinoma tissue.



Western blot analysis of lysate from Jurkat cells, using Pepsin C antibody.

| Contact information

Orders: order.cn@immunoway.com
Support: support.cn@immunoway.com
Telephone: 400-8787-807(China)
Website: <http://www.immunoway.com.cn>
Address: 2200 Ringwood Ave San Jose, CA 95131 USA



Please scan the QR code
to access additional
product information:
Pepsin C Rabbit pAb

For Research Use Only. Not for Use in Diagnostic Procedures.

[Antibody](#) | [ELISA Kits](#) | [Protein](#) | [Reagents](#)