

## PDGF-A Rabbit pAb

CatalogNo: YT3630

Orthogonal Validated 

### Key Features

#### Host Species

- Rabbit

#### Reactivity

- Human, Mouse, Rat

#### Applications

- WB, IHC, IF, ELISA

#### MW

- 17kD (Observed)

#### Isotype

- IgG

### Recommended Dilution Ratios

WB 1:500-1:2000

IHC 1:100-1:300

ELISA 1:40000

IF 1:50-200

### Storage

#### Storage\*

-15°C to -25°C/1 year (Do not lower than -25°C)

#### Formulation

Liquid in PBS containing 50% glycerol, 0.5% BSA and 0.02% sodium azide.

### Basic Information

#### Clonality

Polyclonal

### Immunogen Information

#### Immunogen

The antiserum was produced against synthesized peptide derived from human PDGF-A. AA range: 105-154

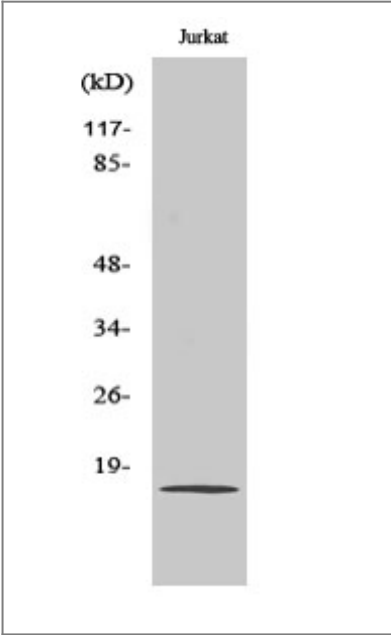
#### Specificity

PDGF-A Polyclonal Antibody detects endogenous levels of PDGF-A protein.

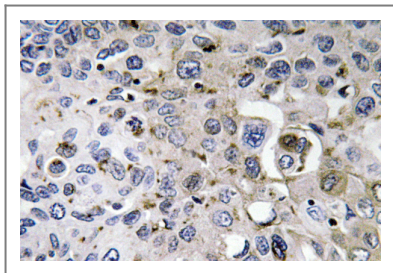
### Target Information

Gene name	PDGFA		
Protein Name	Platelet-derived growth factor subunit A		
	Organism	Gene ID	UniProt ID
	Human	<a href="#">5154</a> ;	<a href="#">P04085</a> ;
	Mouse	<a href="#">18590</a> ;	<a href="#">P20033</a> ;
	Rat	<a href="#">25266</a> ;	<a href="#">P28576</a> ;
Cellular Localization	Secreted. Released by platelets upon wounding.		
Tissue specificity	PCR rescued clones,		
Function	Domain:The long form contains a basic insert which acts as a cell retention signal.,Function:Platelet-derived growth factor is a potent mitogen for cells of mesenchymal origin. Binding of this growth factor to its affinity receptor elicits a variety of cellular responses. It is released by platelets upon wounding and plays an important role in stimulating adjacent cells to grow and thereby heals the wound.,miscellaneous:A-A and B-B, as well as A-B, dimers can bind to the PDGF receptor.,similarity:Belongs to the PDGF/VEGF growth factor family.,subunit:Antiparallel disulfide-linked dimer of non-identical (A and B) chains. Homodimers of A and B chains are implicated in transformation processes. Interacts with CSPG4.,		

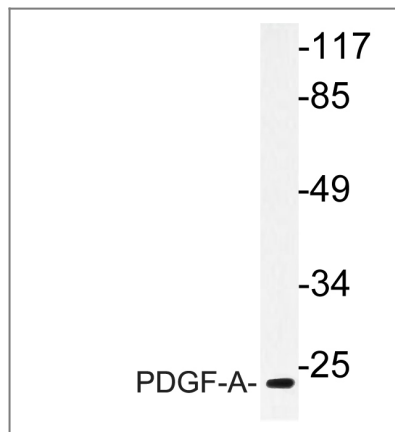
| Validation Data



Western Blot analysis of various cells using PDGF-A Polyclonal Antibody



Immunohistochemistry analysis of PDGF-A antibody in paraffin-embedded human lung carcinoma tissue.



Western blot analysis of lysate from Jurkat cells, using PDGF-A antibody.

## Contact information

Orders: [order.cn@immunoway.com](mailto:order.cn@immunoway.com)  
 Support: [support.cn@immunoway.com](mailto:support.cn@immunoway.com)  
 Telephone: 400-8787-807(China)  
 Website: <http://www.immunoway.com.cn>  
 Address: 2200 Ringwood Ave San Jose, CA 95131 USA



Please scan the QR code  
 to access additional  
 product information:  
**PDGF-A Rabbit pAb**

For Research Use Only. Not for Use in Diagnostic Procedures.

[Antibody](#) | [ELISA Kits](#) | [Protein](#) | [Reagents](#)