

PC-PLD4 Rabbit pAb

CatalogNo: YT3622

Key Features

Host Species

- Rabbit

Reactivity

- Human, Mouse, Rat

Applications

- WB, IHC

MW

- 50kD (Observed)

Isotype

- IgG

Recommended Dilution Ratios

WB 1:500-2000

IHC 1:50-300

Storage

Storage*

-15°C to -25°C/1 year (Do not lower than -25°C)

Formulation

Liquid in PBS containing 50% glycerol, 0.5% BSA and 0.02% sodium azide.

Basic Information

Clonality

Polyclonal

Immunogen Information

Immunogen

The antiserum was produced against synthesized peptide derived from human PLD4. AA range: 457-506

Specificity

PC-PLD4 Polyclonal Antibody detects endogenous levels of PC-PLD4 protein.

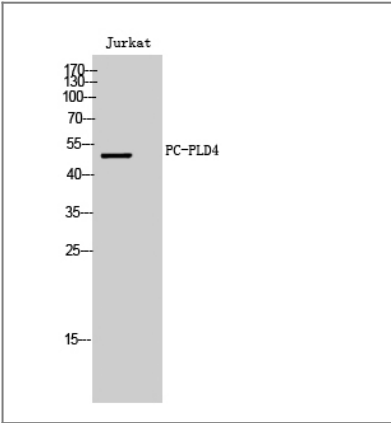
Target Information

Gene name

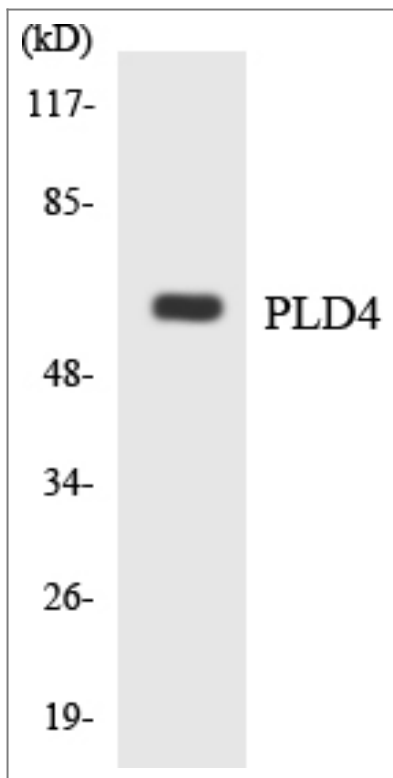
PLD4

Protein Name	Phospholipase D4		
	Organism	Gene ID	UniProt ID
	Human	122618 ;	Q96BZ4 ;
	Mouse	104759 ;	Q8BG07 ;
Cellular Localization	Endoplasmic reticulum membrane ; Single-pass type II membrane protein . Golgi apparatus, trans-Golgi network membrane ; Single-pass type II membrane protein . Nucleus . Early endosome . Cytoplasmic vesicle, phagosome . Activation of microglia induces translocation of PLD4 from the nucleus to the phagosomes. .		
Tissue specificity	B-cell,T-cell,		
Function	Catalytic activity:A phosphatidylcholine + H(2)O = choline + a phosphatidate.,similarity:Belongs to the phospholipase D family.,similarity:Contains 2 PLD phosphodiesterase domains.,		

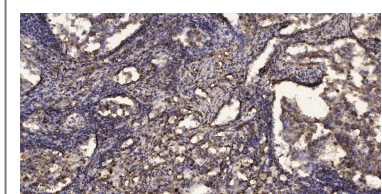
Validation Data



Western Blot analysis of Jurkat cells using PC-PLD4 Polyclonal Antibody



Western blot analysis of the lysates from K562 cells using PLD4 antibody.



Immunohistochemical analysis of paraffin-embedded human Squamous cell carcinoma of lung. 1, Antibody was diluted at 1:200(4° overnight). 2, Tris-EDTA,pH9.0 was used for antigen retrieval. 3,Secondary antibody was diluted at 1:200(room temperature, 45min).

Contact information

Orders: order.cn@immunoway.com
 Support: support.cn@immunoway.com
 Telephone: 400-8787-807(China)
 Website: <http://www.immunoway.com.cn>
 Address: 2200 Ringwood Ave San Jose, CA 95131 USA



Please scan the QR code to access additional product information:
PC-PLD4 Rabbit pAb

For Research Use Only. Not for Use in Diagnostic Procedures.

[Antibody](#) | [ELISA Kits](#) | [Protein](#) | [Reagents](#)