

## PAK5 Rabbit pAb

CatalogNo: YT3573

### Key Features

#### Host Species

- Rabbit

#### Reactivity

- Human, Mouse, Rat

#### Applications

- WB, IHC, IF, ELISA

#### MW

- 80kD (Observed)

#### Isotype

- IgG

### Recommended Dilution Ratios

**WB 1:500-1:2000**

**IHC 1:100-1:300**

**ELISA 1:40000**

**IF 1:50-200**

### Storage

#### Storage\*

-15°C to -25°C/1 year (Do not lower than -25°C)

#### Formulation

Liquid in PBS containing 50% glycerol, 0.5% BSA and 0.02% sodium azide.

### Basic Information

#### Clonality

Polyclonal

### Immunogen Information

#### Immunogen

The antiserum was produced against synthesized peptide derived from human PAK7. AA range: 661-710

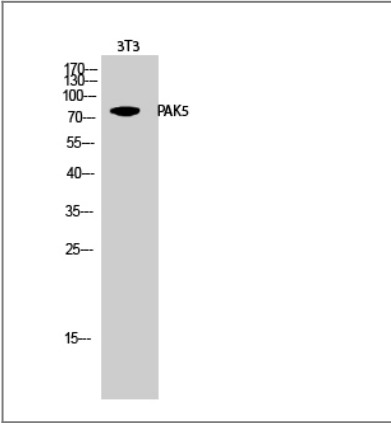
#### Specificity

PAK5 Polyclonal Antibody detects endogenous levels of PAK5 protein.

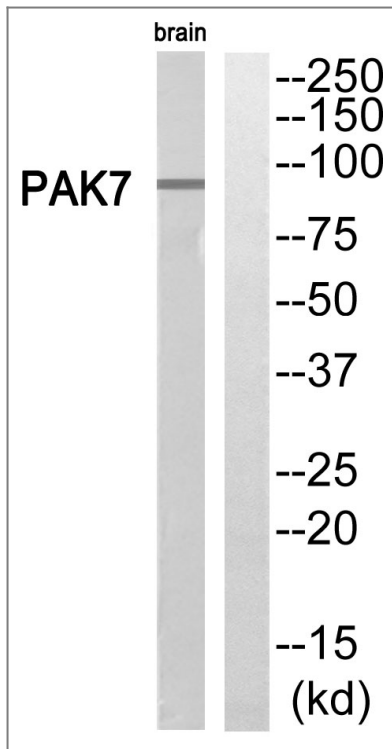
### Target Information

Gene name	PAK7		
Protein Name	Serine/threonine-protein kinase PAK 7		
	Organism	Gene ID	UniProt ID
	Human	<a href="#">57144;</a>	<a href="#">Q9P286;</a>
	Mouse	<a href="#">241656;</a>	<a href="#">Q8C015;</a>
	Rat	<a href="#">311450;</a>	<a href="#">D4A280;</a>
Cellular Localization	Mitochondrion. Cytoplasm. Nucleus. Shuttles between the nucleus and the mitochondria, and mitochondrial localization is essential for the role in cell survival.		
Tissue specificity	Predominantly expressed in brain.		
Function	Catalytic activity:ATP + a protein = ADP + a phosphoprotein.,Function:The activated kinase acts on a variety of targets.,PTM:Autophosphorylated when activated by CDC42/p21.,similarity:Belongs to the protein kinase superfamily. STE Ser/Thr protein kinase family. STE20 subfamily.,similarity:Contains 1 CRIB domain.,similarity:Contains 1 protein kinase domain.,subunit:Interacts tightly with GTP-bound but not GDP-bound CDC42/p21 and RAC1.,tissue specificity:Predominantly expressed in brain.,		

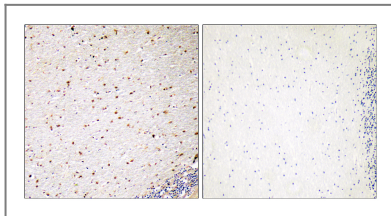
| Validation Data



Western Blot analysis of 3T3 cells using PAK5 Polyclonal Antibody



Western blot analysis of PAK7 Antibody. The lane on the right is blocked with the PAK7 peptide.



Immunohistochemistry analysis of paraffin-embedded human brain, using PAK7 Antibody. The lane on the right is blocked with the PAK7 peptide.

## Contact information

Orders: order.cn@immunoway.com  
 Support: support.cn@immunoway.com  
 Telephone: 400-8787-807(China)  
 Website: <http://www.immunoway.com.cn>  
 Address: 2200 Ringwood Ave San Jose, CA 95131 USA



Please scan the QR code to access additional product information:  
**PAK5 Rabbit pAb**

For Research Use Only. Not for Use in Diagnostic Procedures.

[Antibody](#) | [ELISA Kits](#) | [Protein](#) | [Reagents](#)