

PAI-2 Rabbit pAb

CatalogNo: YT3570

Key Features

Host Species

- Rabbit

Reactivity

- Human,Rat,Mouse,

Applications

- WB,IHC,IF,ELISA

MW

- 46kD (Observed)

Isotype

- IgG

Recommended Dilution Ratios

WB 1:500-1:2000

IHC 1:100-1:300

ELISA 1:40000

IF 1:50-200

Storage

Storage*

-15°C to -25°C/1 year(Do not lower than -25°C)

Formulation

Liquid in PBS containing 50% glycerol, 0.5% BSA and 0.02% sodium azide.

Basic Information

Clonality

Polyclonal

Immunogen Information

Immunogen

The antiserum was produced against synthesized peptide derived from human PAI-2. AA range:258-307

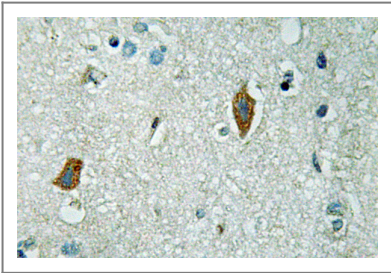
Specificity

PAI-2 Polyclonal Antibody detects endogenous levels of PAI-2 protein.

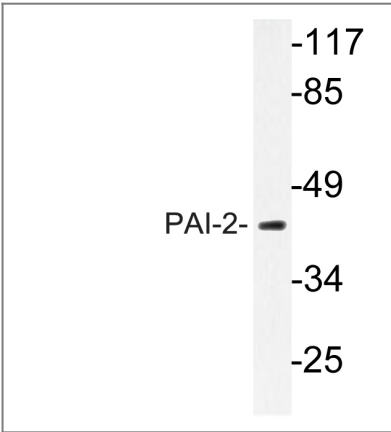
Target Information

Gene name	SERPINB2		
Protein Name	Plasminogen activator inhibitor 2		
	Organism	Gene ID	UniProt ID
	Human	5055;	P05120;
	Mouse		P12388;
Cellular Localization	Cytoplasm. Secreted, extracellular space.		
Tissue specificity	Brain,Monocyte,Placenta,		
Function	Function:Inhibits urokinase-type plasminogen activator. The monocyte derived PAI-2 is distinct from the endothelial cell-derived PAI-1.,PTM:The signal sequence is not cleaved.,similarity:Belongs to the serpin family. Ov-serpin subfamily.,		

| Validation Data



Immunohistochemistry analysis of PAI-2 antibody in paraffin-embedded human brain tissue.



Western blot analysis of lysate from MCF-7 cells, using PAI-2 antibody.

| Contact information

Orders: order.cn@immunoway.com
Support: support.cn@immunoway.com
Telephone: 400-8787-807(China)
Website: <http://www.immunoway.com.cn>
Address: 2200 Ringwood Ave San Jose, CA 95131 USA



Please scan the QR code
to access additional
product information:
PAI-2 Rabbit pAb

For Research Use Only. Not for Use in Diagnostic Procedures.

[Antibody](#) | [ELISA Kits](#) | [Protein](#) | [Reagents](#)