

## PAF65 $\alpha$ Rabbit pAb

CatalogNo: YT3565

### Key Features

**Host Species**

- Rabbit

**Reactivity**

- Human, Mouse

**Applications**

- WB, IHC, IF, ELISA

**MW**

- 68kD (Observed)

**Isotype**

- IgG

### Recommended Dilution Ratios

**WB 1:500-1:2000****IHC 1:100-1:300****ELISA 1:40000****IF 1:50-200**

### Storage

**Storage\***

-15°C to -25°C/1 year (Do not lower than -25°C)

**Formulation**

Liquid in PBS containing 50% glycerol, 0.5% BSA and 0.02% sodium azide.

### Basic Information

**Clonality**

Polyclonal

### Immunogen Information

**Immunogen**

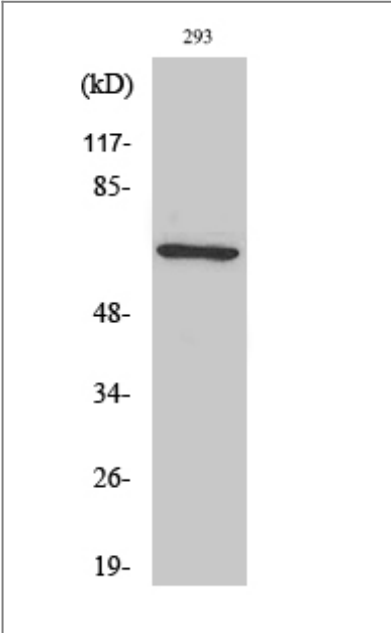
The antiserum was produced against synthesized peptide derived from human TAF6L. AA range: 31-80

**Specificity**PAF65 $\alpha$  Polyclonal Antibody detects endogenous levels of PAF65 $\alpha$  protein.

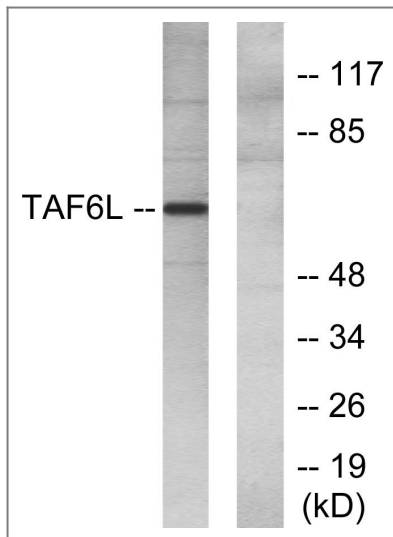
### Target Information

Gene name	TAF6L		
Protein Name	TAF6-like RNA polymerase II p300/CBP-associated factor-associated factor 65 kDa subunit 6L		
	Organism	Gene ID	UniProt ID
	Human	<a href="#">10629</a> ;	<a href="#">Q9Y6J9</a> ;
	Mouse	<a href="#">225895</a> ;	<a href="#">Q8R2K4</a> ;
Cellular Localization	Nucleus .		
Function	Function:Functions as a component of the PCAF complex. The PCAF complex is capable of efficiently acetylating histones in a nucleosomal context. The PCAF complex could be considered as the human version of the yeast SAGA complex.,PTM:Phosphorylated upon DNA damage, probably by ATM or ATR.,similarity:Belongs to the TAF6 family.,subunit:The PCAF complex is composed of a number of TBP-associated factors (TAFS), such as TAF5, TAF5L, TAF6, TAF6L, TAF9, TAF10 and TAF12, PCAF, and also PCAF-associated factors (PAFs), such as TADA2L/ADA2, TADA3L/ADA3 and SPT3. Component of the STAGA transcription coactivator-HAT complex, at least composed of SUPT3H, GCN5L2, TAF5L, TAF6L, SUPT7L, TADA3L, TAD1L, TAF10, TAF12, TRRAP and TAF9.,		

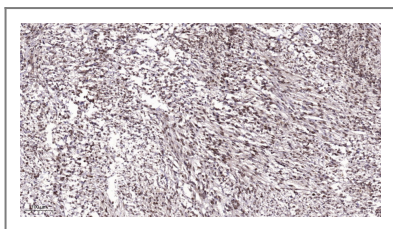
Validation Data



Western Blot analysis of 293 cells using PAF65α Polyclonal Antibody diluted at 1:1000 cells nucleus extracted by Minute TM Cytoplasmic and Nuclear Fractionation kit (SC-003,Inventbiotech,MN,USA).



Western blot analysis of lysates from 293 cells, using TAF6L Antibody. The lane on the right is blocked with the synthesized peptide.



Immunohistochemical analysis of paraffin-embedded human Colon cancer. 1, Antibody was diluted at 1:200(4° overnight). 2, Tris-EDTA, pH9.0 was used for antigen retrieval. 3, Secondary antibody was diluted at 1:200(room temperature, 45min).

## Contact information

Orders: order.cn@immunoway.com  
 Support: support.cn@immunoway.com  
 Telephone: 400-8787-807(China)  
 Website: <http://www.immunoway.com.cn>  
 Address: 2200 Ringwood Ave San Jose, CA 95131 USA



Please scan the QR code to access additional product information:  
**PAF65α Rabbit pAb**

For Research Use Only. Not for Use in Diagnostic Procedures.

[Antibody](#) | [ELISA Kits](#) | [Protein](#) | [Reagents](#)