

PABP5 Rabbit pAb

CatalogNo: YT3564

Key Features

Host Species

- Rabbit

Reactivity

- Human

Applications

- WB,IHC,IF,ELISA

MW

- 43kD (Observed)

Isotype

- IgG

Recommended Dilution Ratios

WB 1:500-1:2000

IHC 1:100-1:300

ELISA 1:10000

IF 1:50-200

Storage

Storage*

-15°C to -25°C/1 year(Do not lower than -25°C)

Formulation

Liquid in PBS containing 50% glycerol, 0.5% BSA and 0.02% sodium azide.

Basic Information

Clonality

Polyclonal

Immunogen Information

Immunogen

The antiserum was produced against synthesized peptide derived from human PABPC5. AA range:184-233

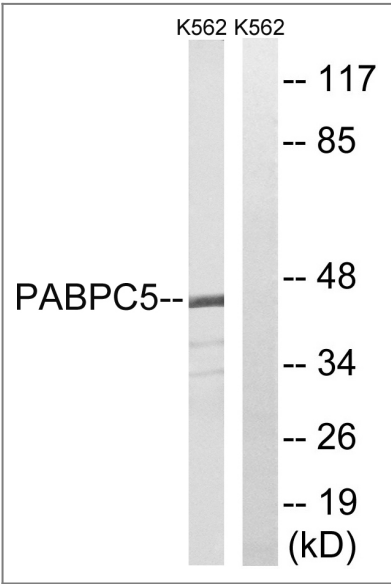
Specificity

PABP5 Polyclonal Antibody detects endogenous levels of PABP5 protein.

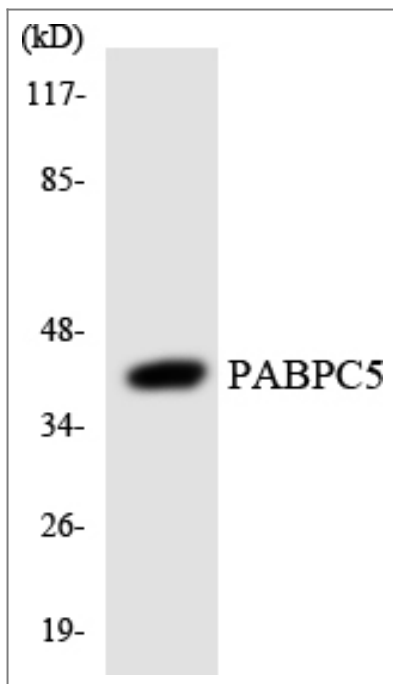
Target Information

Gene name	PABPC5		
Protein Name	Polyadenylate-binding protein 5		
	Organism	Gene ID	UniProt ID
	Human	140886 ;	Q96DU9 ;
Cellular Localization	Cytoplasm .; [Isoform 2]: Mitochondrion matrix . Co-fractionates with mtDNA and co-immunoprecipitates with the mitochondrial poly(A) polymerase.		
Tissue specificity	Expressed in fetal brain and in a range of adult tissues.		
Function	Function: Binds the poly(A) tail of mRNA. May be involved in cytoplasmic regulatory processes of mRNA metabolism. Can probably bind to cytoplasmic RNA sequences other than poly(A) in vivo., similarity: Contains 4 RRM (RNA recognition motif) domains., tissue specificity: Expressed in fetal brain and in a range of adult tissues.,		

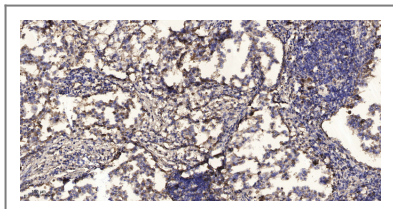
Validation Data



Western blot analysis of lysates from K562 cells, using PABPC5 Antibody. The lane on the right is blocked with the synthesized peptide.



Western blot analysis of the lysates from HeLa cells using PABPC5 antibody.



Immunohistochemical analysis of paraffin-embedded human Squamous cell carcinoma of lung. 1, Antibody was diluted at 1:200(4° overnight). 2, Tris-EDTA, pH 9.0 was used for antigen retrieval. 3, Secondary antibody was diluted at 1:200(room temperature, 45min).

Contact information

Orders: order.cn@immunoway.com
 Support: support.cn@immunoway.com
 Telephone: 400-8787-807(China)
 Website: <http://www.immunoway.com.cn>
 Address: 2200 Ringwood Ave San Jose, CA 95131 USA



Please scan the QR code
 to access additional
 product information:
PABP5 Rabbit pAb

For Research Use Only. Not for Use in Diagnostic Procedures.

[Antibody](#) | [ELISA Kits](#) | [Protein](#) | [Reagents](#)