

## p44S10 Rabbit pAb

CatalogNo: YT3517

### Key Features

#### Host Species

- Rabbit

#### Reactivity

- Human, Mouse, Rat

#### Applications

- WB, IHC, IF, ELISA

#### MW

- 45kD (Observed)

#### Isotype

- IgG

### Storage

**Storage\*** -15°C to -25°C/1 year (Do not lower than -25°C)

**Formulation** Liquid in PBS containing 50% glycerol, 0.5% BSA and 0.02% sodium azide.

### Recommended Dilution Ratios

**WB 1:500-1:2000**

**IHC 1:100-1:300**

**ELISA 1:40000**

**IF 1:50-200**

### Basic Information

**Clonality** Polyclonal

### Immunogen Information

**Immunogen** The antiserum was produced against synthesized peptide derived from human PSMD6. AA range:201-250

**Specificity** p44S10 Polyclonal Antibody detects endogenous levels of p44S10 protein.

### Target Information

**Gene name** PSMD6

**Protein Name** 26S proteasome non-ATPase regulatory subunit 6

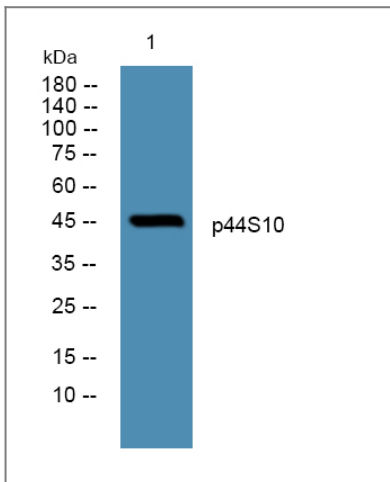
Organism	Gene ID	UniProt ID
Human	<a href="#">9861</a> ;	<a href="#">Q15008</a> ;
Mouse	<a href="#">66413</a> ;	<a href="#">Q99J14</a> ;

**Cellular Localization** proteasome complex,nucleoplasm,cytosol,proteasome regulatory particle,proteasome accessory complex,extracellular exosome,

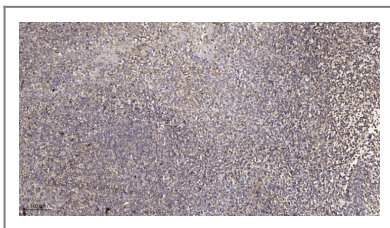
**Tissue specificity** Bone marrow,Lymph,Mammary cancer,Ovary,Placenta,Testis,

**Function** Function:Acts as a regulatory subunit of the 26S proteasome which is involved in the ATP-dependent degradation of ubiquitinated proteins.,similarity:Belongs to the proteasome subunit S10 family.,similarity:Contains 1 PCI domain.,subunit:Component of the PA700 complex.,

## Validation Data



Western blot analysis of lysates from K562 cells, primary antibody was diluted at 1:1000, 4° over night



Immunohistochemical analysis of paraffin-embedded human tonsil. 1, Antibody was diluted at 1:200(4° overnight). 2, Tris-EDTA,pH9.0 was used for antigen retrieval. 3,Secondary antibody was diluted at 1:200(room temperature, 30min).

## Contact information

Orders: order.cn@immunoway.com  
Support: support.cn@immunoway.com  
Telephone: 400-8787-807(China)  
Website: <http://www.immunoway.com.cn>  
Address: 2200 Ringwood Ave San Jose, CA 95131 USA



Please scan the QR code  
to access additional  
product information:  
**p44S10 Rabbit pAb**

---

For Research Use Only. Not for Use in Diagnostic Procedures.

[Antibody](#) | [ELISA Kits](#) | [Protein](#) | [Reagents](#)