

## p15 Rabbit pAb

CatalogNo: YT3492

Orthogonal Validated 

### Key Features

#### Host Species

- Rabbit

#### Reactivity

- Human, Mouse, Rat

#### Applications

- WB, IHC, IF, ELISA

#### MW

- 14kD (Observed)

#### Isotype

- IgG

### Recommended Dilution Ratios

**WB 1:500-1:2000****IHC 1:100-1:300****IF 1:200-1:1000****ELISA 1:40000****Not yet tested in other applications.**

### Storage

**Storage\***

-15°C to -25°C/1 year (Do not lower than -25°C)

**Formulation**

Liquid in PBS containing 50% glycerol, 0.5% BSA and 0.02% sodium azide.

### Basic Information

**Clonality**

Polyclonal

### Immunogen Information

**Immunogen**

The antiserum was produced against synthesized peptide derived from human p15 INK. AA range: 89-138

**Specificity**

p15 Polyclonal Antibody detects endogenous levels of p15 protein.

## Target Information

**Gene name** CDKN2B

**Protein Name** Cyclin-dependent kinase 4 inhibitor B

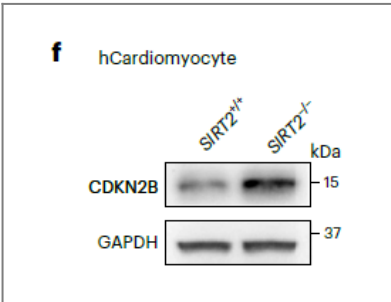
Organism	Gene ID	UniProt ID
Human	<a href="#">1030</a> ;	<a href="#">P42772</a> ;
Mouse	<a href="#">12579</a> ;	<a href="#">P55271</a> ;
Rat	<a href="#">25164</a> ;	<a href="#">P55272</a> ;

**Cellular Localization** Cytoplasm . Also found in the nucleus.

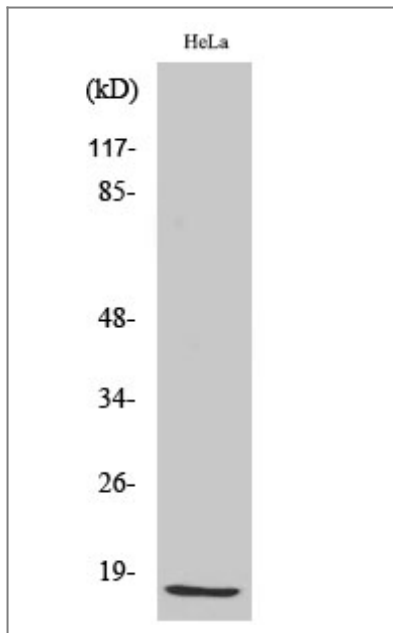
**Tissue specificity** Isoform 2 is expressed in normal (keratinocytes, fibroblasts) and tumor cell lines.

**Function** Disease:Defects in CDKN2B are involved in tumor formation.,Function:Interacts strongly with CDK4 and CDK6. Potent inhibitor. Potential effector of TGF-beta induced cell cycle arrest.,polymorphism:Genetic variations in CDKN2B may underlie susceptibility to uveal melanoma [MIM:155720]. Uveal melanoma is the most common type of ocular malignant tumor, consisting of overgrowth of uveal melanocytes and often preceded by a uveal nevus.,similarity:Belongs to the CDKN2 cyclin-dependent kinase inhibitor family.,similarity:Contains 4 ANK repeats.,subunit:Heterodimer of CDKN2B with CDK4 or CDK6.,

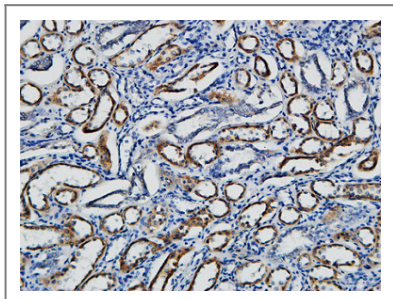
## Validation Data



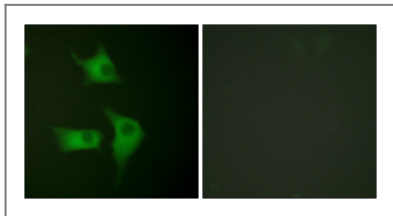
SIRT2 counteracts primate cardiac aging via deacetylation of STAT3 that silences CDKN2B. Nature Aging Guang-Hui Liu WB Mouse,Human 1:3000 hearts cardiomyocytes



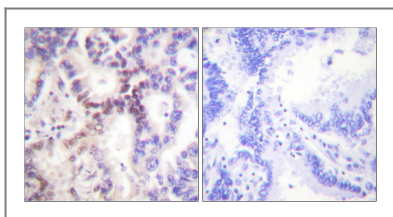
Western Blot analysis of various cells using p15 Polyclonal Antibody diluted at 1:500



Immunohistochemical analysis of paraffin-embedded Human Right kidney. 1, Antibody was diluted at 1:100(4° overnight). 2, High-pressure and temperature EDTA, pH8.0 was used for antigen retrieval. 3, Secondary antibody was diluted at 1:200(room temperature, 30min).



Immunofluorescence analysis of HeLa cells, using p15 INK Antibody. The picture on the right is blocked with the synthesized peptide.



Immunohistochemistry analysis of paraffin-embedded human lung carcinoma tissue, using p15 INK Antibody. The picture on the right is blocked with the synthesized peptide.

## Contact information

Orders: order.cn@immunoway.com  
 Support: support.cn@immunoway.com  
 Telephone: 400-8787-807(China)  
 Website: <http://www.immunoway.com.cn>  
 Address: 2200 Ringwood Ave San Jose, CA 95131 USA



Please scan the QR code to access additional product information:  
**p15 Rabbit pAb**

